

Freddy 2.0

Great capacity and extreme manageability



CART

Frequent usage

Emergency room

Resuscitation

Operating room

ICU





RETRACTABLE SIDE TRAY

Benefits



- Sturdy and with sheets in stainless steel painted with thermosetting paint.
- Accessories in stainless material.
- Single body structure and self-supporting.
- Swivable wheels with sliding system for easy driving.
- The cart is upgradable with a wide range of accessories that can be placed on the DIN bars located on 3 sides.
- Push and pull extra tray.
- Anti-tilting structure.
- Table top made in plastic material without sharp edges for easy cleaning and disinfection.
- Drawers in steel sheets, sliding on glides with automatic lock:
 - No. 3 drawers 75,8 mm
 - No. 2 drawers 154, 5 mm
 - No. 1 drawer 234 mm
- Drawers centralized locking system.
- Glides can support up to 60 kg.

Standard configuration



- First drawer provided with guarantee seal.
- No. 10 self-destructing seals.
- No. 3 lateral DIN bars.
- No. 1 back DIN bar.
- Centralized locking system with key.
- Double key.
- No. 4 Ø 125 mm swivable and stainless wheels of which 2 with pedal brake. No marking, extremely silent, sliding on high performing roller bearing.
- No. 4 bumpers for each corner of the base.
- Push and pull extra tray.
- Table top with integrated push handle.



Movements



Recommended accessories



ACCF1



IV pole

ACCF2



Trash bin

ACCF3



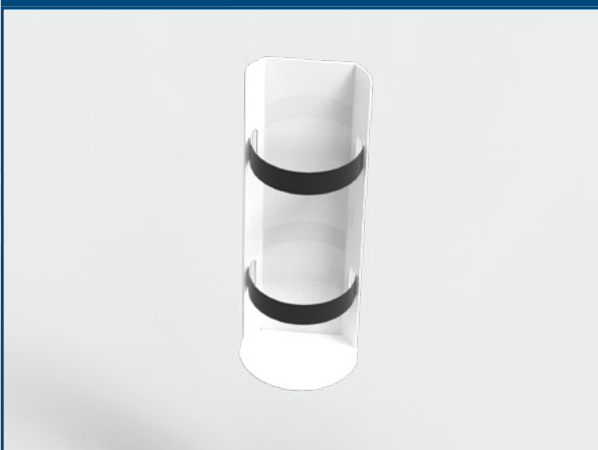
Manual hand sanitizer

ACCF4



Automatic hand sanitizer

ACCF5



Hoxigen tank holder

ACCF6



Defibrillator or monitor trays



Recommended accessories

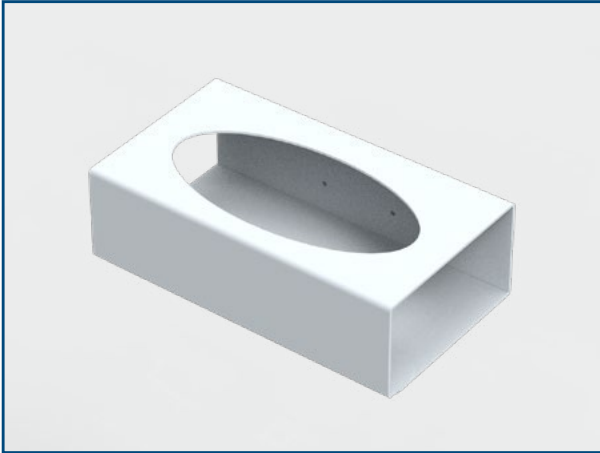


ACCF7



Bottle rack

ACCF8



Case for gloves

ACCF9



Needles rack

ACCF10



Defibrillator or monitor tray

ACCF11



Resuscitation board

ACCF12



Guarantee seal



Recommended accessories



ACCF13



Guarantee seal with serial number

ACCF14



Assemblable drawers cabinet

ACCF15



Drawer dividers: ACCF15/1 - 10 compartments; ACCF15/2 - 15 compartments; ACCF15/3 - 20 compartments; ACCF15/4 - 25 compartments

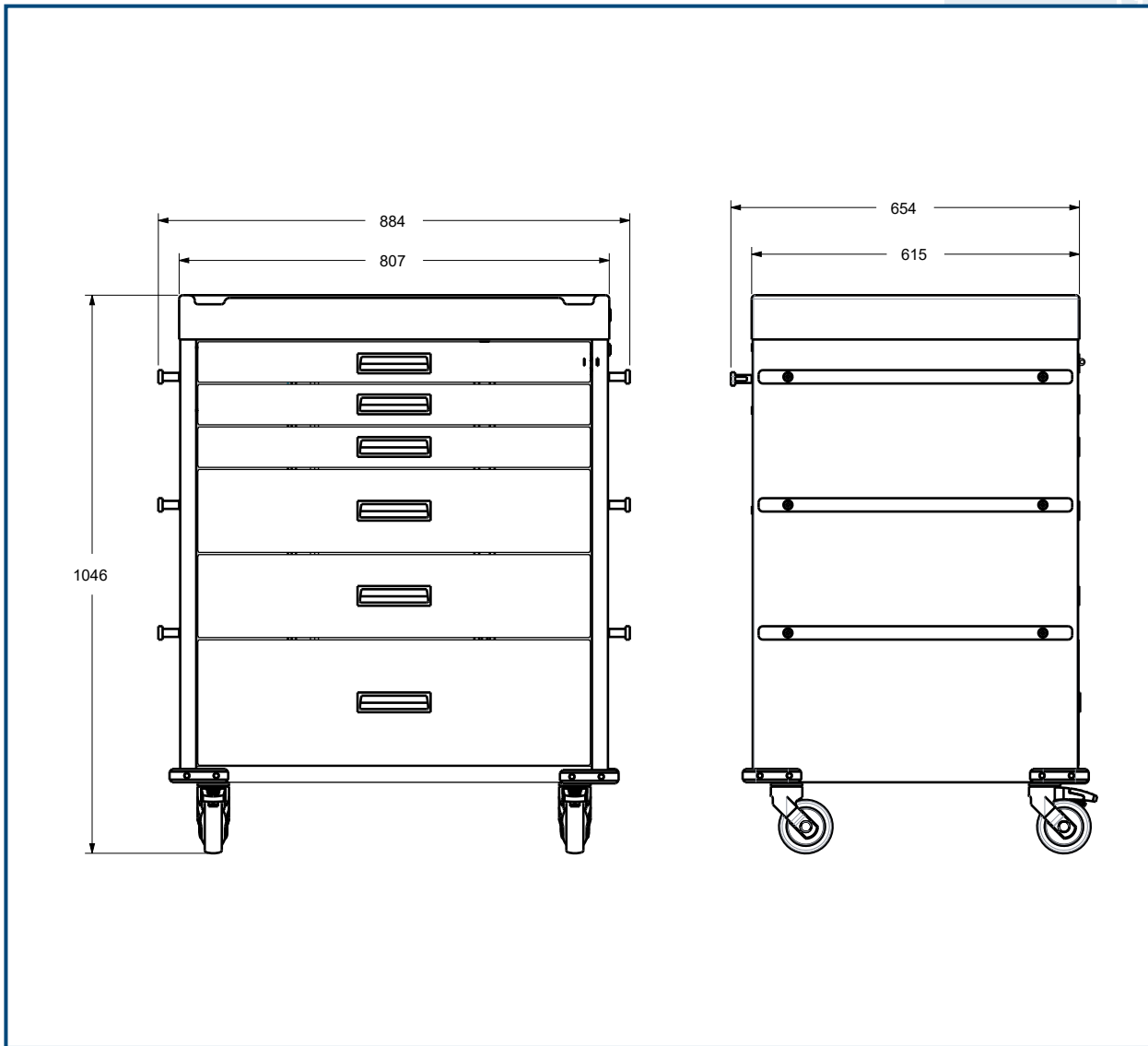
ACCF16



Centralized and sealable locking



Dimensions



Technical data



GMND Code	-
ID Code	GB0320.SP-2.0
Intended use	Emergency cart
Manufacturer	GARDHEN BILANCE SRL

For certifications please refer to "Certifications and Quality system" section

Pictures contained in this brochure is for illustrative purpose only. The manufacturer reserves the right to modify the projects without notice. For accessories identification please refer to the accessory catalogue or commercial offer. When data are different please refer to commercial offer.

Dep. EN_157 rev. 16/02/2022

