

Stephen Scale H Ybrid

Multifunctional chair
with integrated weighing system



CHAIR WITH
INTEGRATED SCALE

Frequent Usage

Chemotherapy
Infusion therapy
Day Hospital
Blood Donation
Blood samples
Emergency room
Dialysis
Patient transport
Multifunctional



VERSION WITH OPTIONAL COMPONENTS

High
COMFORT

Inpatient and outpatient therapy



gardhen
balance

www.gardhenbalance.it



High COMFORT

Inpatient and outpatient therapy

The Stephen Scale H Ybrid device represents an innovative furniture solution that reduces the psychological distress of the inpatient. The chair lends itself to accommodating the patient throughout the hospital journey: from reception/reception, preparation, any treatments/therapies, and disposal. All on a single device.

DIGITAL DISPLAY

For management of the weighing and handling system.

HEADREST CUSHION

made of antibacterial material and adjustable in height.



WHEELS

stainless and swivel
ø 100 mm.

BRAKE

with directional system
and operated by
bilateral foot pedal.

VERSION WITH OPTIONAL COMPONENTS



Braking system

Bilateral pedals for centralized brake and directional guidance system - Equipment code AC7L2G.

Levers can be positioned in the front or rear.



Emergency Button

The bilateral emergency button with indicator light for clinostatism. Equipment code AC74/2.



Boards with Handle

The boards features an ergonomic handle/handle for carrying with a raised backrest.



Do you want to implement the device?

Frame the QR code and discover all the components optional available



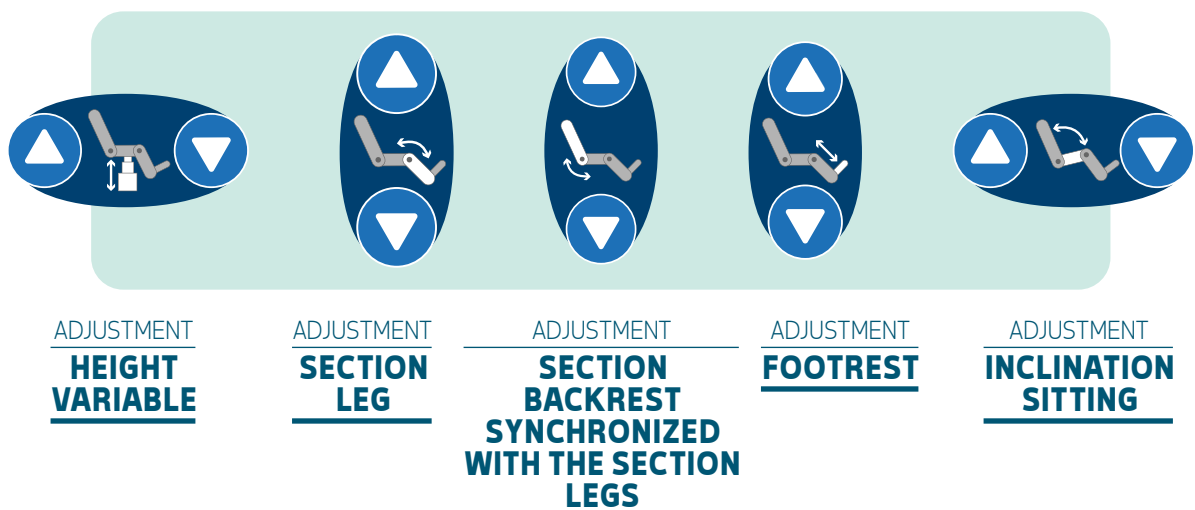
GB Touch

Control panel for electrical movements

The GB Touch display-console allows all electrical movements of the device to be managed through the dedicated control panel.



MANAGEMENT OF ELECTRICAL MOVEMENTS



For more information from the GB Touch

Frame or click the QR code button and discover all the features and potential of the display.



Handset

It is possible to use the handset for movement management. The handset is connected to the device by means of 3.5 m extendable coiled wire, and is intuitive and practical to use since it is equipped with embossed screen-printed pictograms that identify each movement that can be activated.



MOVEMENTS AND FUNCTIONS

Movement of sections:

- Back section
- Leg section
- Simultaneous back/leg sections (memory key green color)
- Trendelenburg (yellow color memory key)
- variable height
- Footrest Adjustment



Movements



SHOCK POSITION



CLINOSTATIC

VERSIONS WITH OPTIONAL COMPONENTS



Features of GB Touch

- Power on via Soft Touch Key
- Movement management
- Low voltage power supply
- Plastic indicator box with IP65 insulation
- Battery status indicator
- Display lighting control
- Screen saver
- Night mode
- Smart Functions
- Full control via android/ios/windows app GBSmart
- Scheduled maintenance setting
- Language setting: Italian - English - French - Spanish - German
- Digital protection against accidental or unwanted access



Features and functionality of the weighing system

- Lettura peso tramite display touch screen HD 10.1"
- Patient master data
- Patient location indication
- Tare: automatic and manual always visible
- Unit indicator: unit of measure selectable between kg and lbi
- Capacity: 200 kg;
- Automatic display double scale minimum division:
50g up to 150kg; 100g from 150kg up to 200kg;
- Converter: 24bit, 10,000 divisions
- Weight loss alarms
- Patient descent alarms
- Access log
- Remote parameter control
- Automatic data transmission to enabled ports
- Porta Ethernet 10/100
- Optional: WI-Fi/Bluetooth combo module - USB A port for weight data transmission - USB B port for external printer connection - RS-232 port - RS-485 port.
- Backup battery to ensure autonomy of weighing system in power failure - equipment code AC17/P



Other features of the medical device

- Painted steel frame made of thermosetting powders enriched with antibacterial. Customizable color.
- No. 4 motors for moving the sections:
 - Simultaneous back/leg movement.
 - Dedicated motor for independent adjustment of backrest and leg sections - Equipment code AC12.
 - Dedicated motor for adjusting seat inclination - Equipment code AC35/1.
 - Dedicated motor for footrest adjustment - Equipment code AC13/C1.
- Variable height through 2 motorized columns - Equipment code AC28/300.
- No. 4 stainless swivel castors Ø 100 mm.
- Centralized brake via bilateral foot pedal with directional system - Equipment code AC7P2G.
- Bilateral emergency button for clinostatism - Equipment code AC74/2.
- Carrying handle-Equipment code AC56.
- All chair movements are controlled by a perimeter hand control equipped with a 3.5 m coiled cable. The hand control is easy to use as it is made with large raised pictograms and is also suitable for visually impaired patients. The hand control is equipped with 10 keys with 2 memories.
- For patient safety, the hand control is equipped with a key for control inhibition - Equipment code AC34P. IP66 insulation.
- Bilateral hand control support on armrest, accessible to patient - Supply code AC25P.
- Additional height-adjustable headrest cushion. Made of foam resin and antibacterial coating - Supply code AC27.
- Removable soft cover for footrest - Supply code AC16/1
- Adjustable armrests-Equipment code AC30/H1.
- ABS base cover for Stephen H-Ybrid - Equipment code AC83/H.
- ABS seat cover for Stephen H-Ybrid - equipment code AC84/H.
- Cover ABS schienale per Stephen H-Ybrid - AC86/H
- Fire-retardant leatherette upholstery UNI 9175/87 and 9175FA-1/94 class 1IM - Equipment code AC87/1.
- Touch screen display, located on the back of the backrest - Equipment code AC167.
- Integrated weighing system.

Do you want to change the color of the upholstery and frame?

Frame or click the QR codes and find out how to customize your device by browsing our color cards*.

*If no preference is expressed, the device will be supplied with the available color.

Coating
Leatherette

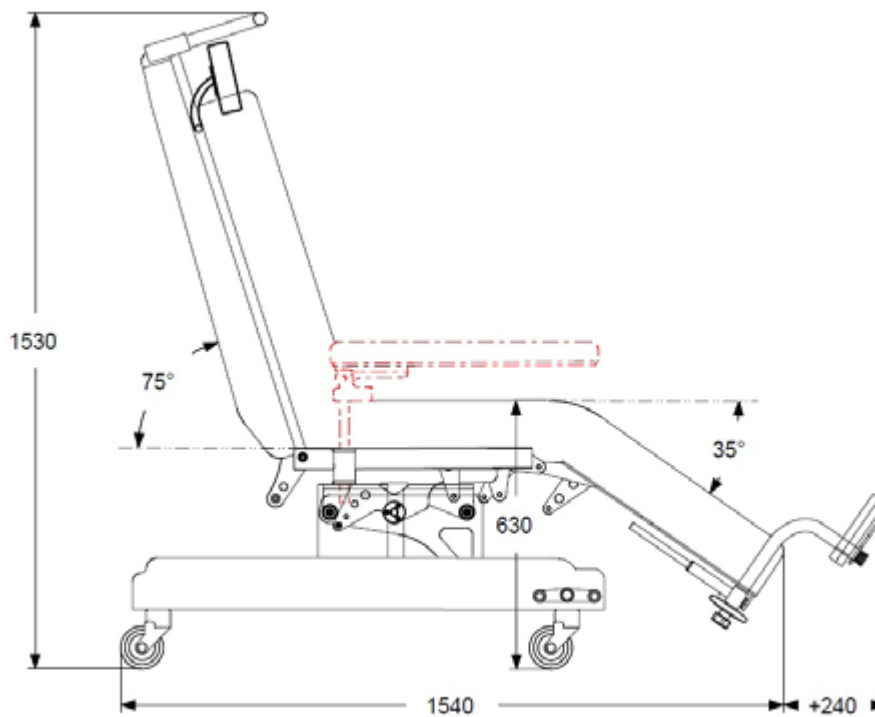
Coating
Silicon

Frame



Dimensions

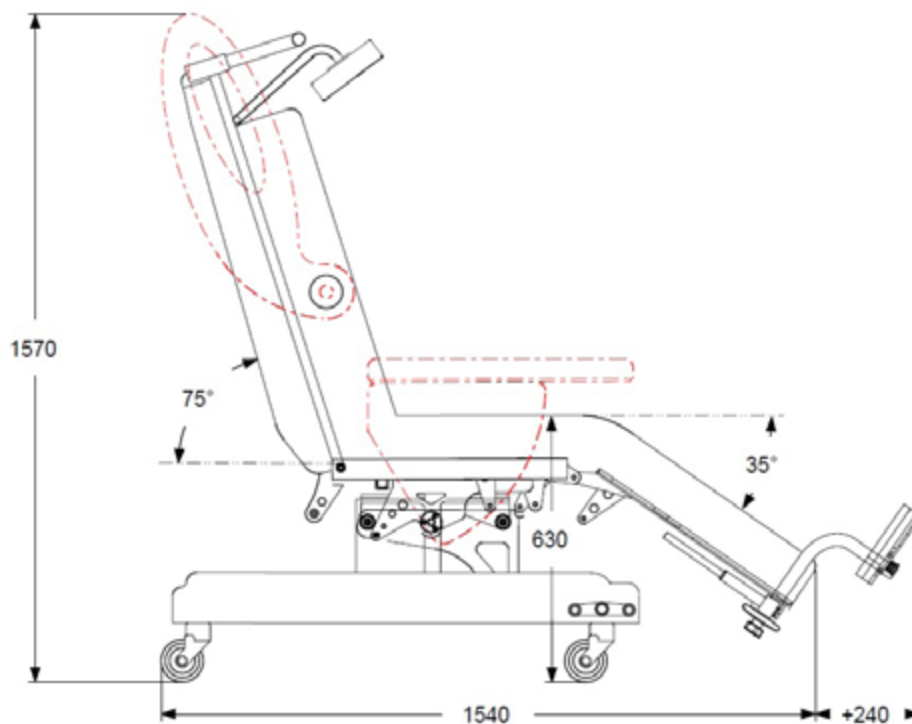
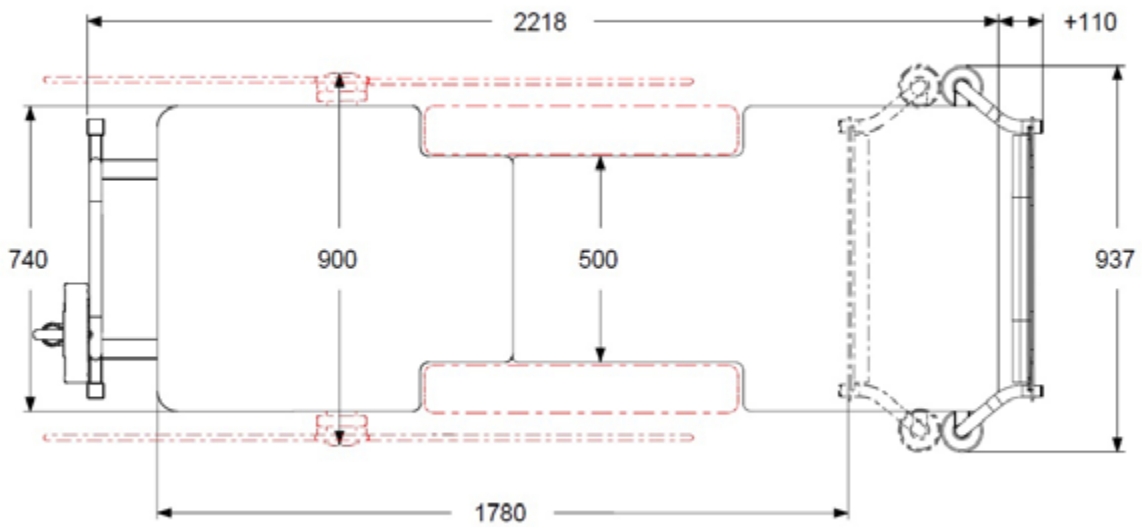
Version with AC30/H1





Dimensions

Version with AC30/EH - AC21/HP2



Power cord type



Type F - Schuko



Type L - 16A



Data sheet

CND Code	V08020102
GMDN Code	35322
No. progressive/R	633588/R
Product Code	GB0139.SP Steel painted GB0139.SS Stainless steel
Intended Use	Armchair scale for mass determination in medical practice in the context of weighing patients for reasons of control, diagnosis and treatment..
Manufacturer	GARDHEN BILANCE SRL
Device weight	140 kg
Type of control	Touch screen display - Push button panel with security inhibition key
Battery	Autonomy 10 cycles
Weighing system batteries	24 V self-rechargeable (approximately 24 hours of battery life)
Power supply	Multivoltage 100-240 Vac 50-60 Hz
Power cord type	Schuko or other upon request
Wheels	No. 4 stainless swivel 100 mm with braking system
Electric motors	Low voltage (24 V)
Max absorption	4A
Insulation	IP44
Maximum Scope	200 kg
Safe Workload	235 kg
Minimum division	With capacity up to 200kg minimum division display 50g up to 150kg: 100g from 150kg up to 200kg.
Cell power supply:	5VDC (1 to 4)
Box display	Plastic viewer box with IP65 insulation
Converter	24bit
Display	Touch screen
Display power supply	24 Vdc
Alarms	Excessive or insufficient weight drop alarm / Patient drop alarm / Brake not engaged alarm / Brake not engaged light alarm / Battery status indicator / Fault alarms / Maintenance due date alarms
Data transmission	Ethernet port 10/100 Optional: WI-Fi/Bluetooth combo module - USB A port for weight data transmission - USB B port for external printer connection - RS-232 port - RS-485 port.
I/O (opz.)	4 outputs
Anti-black-out function	Battery and Software
Tare	Tare subtractions before and during dialysis
Tare mode	Automatic and manual
Compliance	EU Regulation 2017/745 Certificate No. 126/MDR issued by O.N. 0051 Meets, of course , all applicable standards and directives

Stephen Scale H Ybrid

Multifunctional chair with integrated weighing system



VERSION WITH OPTIONAL COMPONENTS



Gardhen Balance S.r.l.

Via G. Luraghi c/o Consorzio Il Sole - lotto S

80038 Pomigliano d'Arco (NA) - Italy

Tel. +39.081.8692160 pbx - Fax +39.081.8692460

E-mail: info@gardenbalance.it

PEC: gardenbalance@pec.it

www.gardenbalance.it / follow us on :     



Images reproduced in this sheet are for reference only and dimensional values are nominal. It is the manufacturer's right to make changes to the designs without prior notice. Refer to the optional components catalog and/or commercial proposals for identification of standard equipment and selection of any additional components. In case of discrepant data, the content of the commercial proposals shall prevail.

Dep. 99 rev. 05/06/2024