

Stephen H Flat

Multifunctional chair



SEATING

Frequent Usage

Chemotherapy
Infusions Therapy
Day Hospital
Blood donor
Blood samples
Emergency
Dialysis
Patient's transport
Dermatology / Cosmetics
Multifunctional



**HIGH
COMFORT**

Inpatient and outpatient therapy

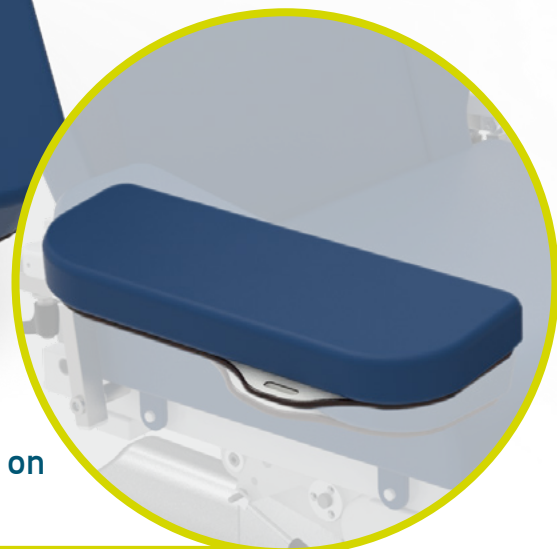


www.gardhenbalance.it



Standard equipment

Fully removable cushions
to facilitate sanitization
activities of the device.



Support for the hand control placed bilaterally on
the armrests. Equipment code AC25P.

Standard equipment

**Armrests ergonomic
multiple adjustment**



Supportive of the Backrest



Rotation



Tiltable



Overtunable



Movements

Synchronized back and leg sections

The movements of the synchronized back and leg sections are controlled by the dedicated buttons on the hand control.

FURTHER EXAMPLE
OF HANDLING:

Recliner Location

Can be activated on push-button panel
and display



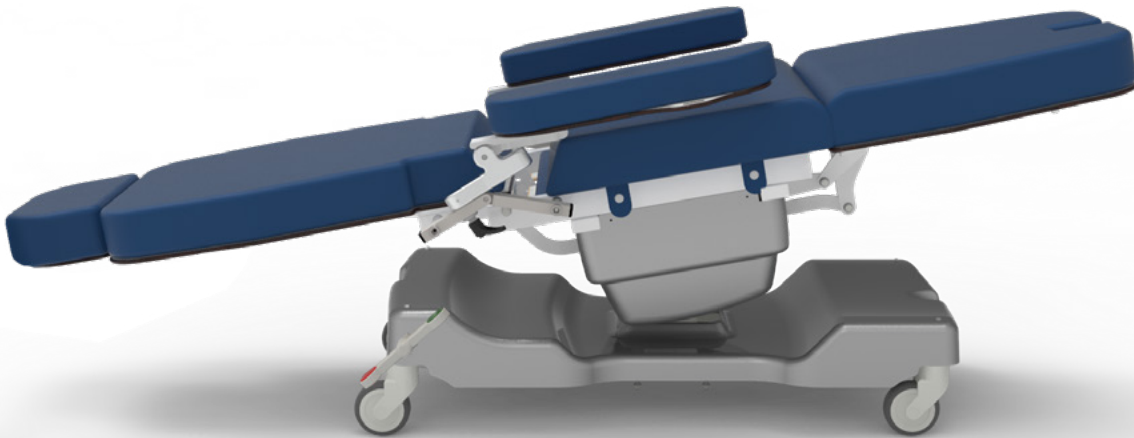
Activation by
Handset



Movements

Trendelenburg

The Trendelenburg position can be obtained through dedicated buttons on the hand control.



Activation by
Handset

Movements

Input/output position



Activation by
Handset





Other features of the medical device

- Thermoset powder coated steel frame.
- Top divided into 4 sections: headrest, backrest, seat and legs.
- Simultaneous movement of back and leg sections by 1 motor.
- Trendelenburg position (alternatively shock position).
- Headrest integral with the backrest.
- Armrests integral to backrest movement, with swivel function, tiltable up/down, 90° tilt; (see accessory catalog for other type of armrests).
- No. 4 durable, antistatic, stainless, swivel casters Ø 100mm.
- Simultaneous brake galvanized steel rear wheels - Equipment code AC7P1G.
- All chair movements are controlled by a perimeter hand control equipped with a 3.5 m coiled cable. The hand control is easy to use as it is made with large raised pictograms and is also suitable for visually impaired patients. The hand control is equipped with 10 keys with 2 memories.
For patient safety, the hand control is equipped with a key for control inhibition - Equipment code AC34P. IP66 insulation.
- Double-sided push-button panel support - Equipment code AC25P.
- ABS cover for base - Equipment code AC83.
- ABS seat cover - Equipment code AC84.
- Easily removable independent soft foam cushions.
- Fire-retardant leatherette upholstery UNI 9175/87 and 9175FA-1/94 class 11M - Equipment code AC87/1.

Do you want to change the color of the upholstery and frame?

Frame or click the QR codes and find out how to customize your device by browsing our color cards*.

*If no preference is expressed, the device will be supplied with the available color.

Coating
Leatherette

Coating
Silicon

Frame



Do you want to implement the device?

Frame the QR code and discover all the components optional available



Technical Sheet

Codice CND/EMDN	V08020101
GMDN Code	38447
No. progressive/R	2406665/R
Basic UDI-DI	805771740POLPE
Product Code	GB0002.SP Steel painted GB0002.SS Stainless steel
Intended Use	Multifunctional armchair
Manufacturer	GARDHEN BILANCE SRL
Device weight	70 kg
Wheels	No. 4 stainless swivel 100 mm with braking system
Power supply	Multivoltage 100-240 Vac 50-60 Hz
Electric motors	Low voltage (24 V)
Max absorption	4A
Insulation	IP44
Maximum Scope	200 kg
Safe Workload	235 kg

Main Cords



Type F
Schuko



Type L
16A



Type I
Australia



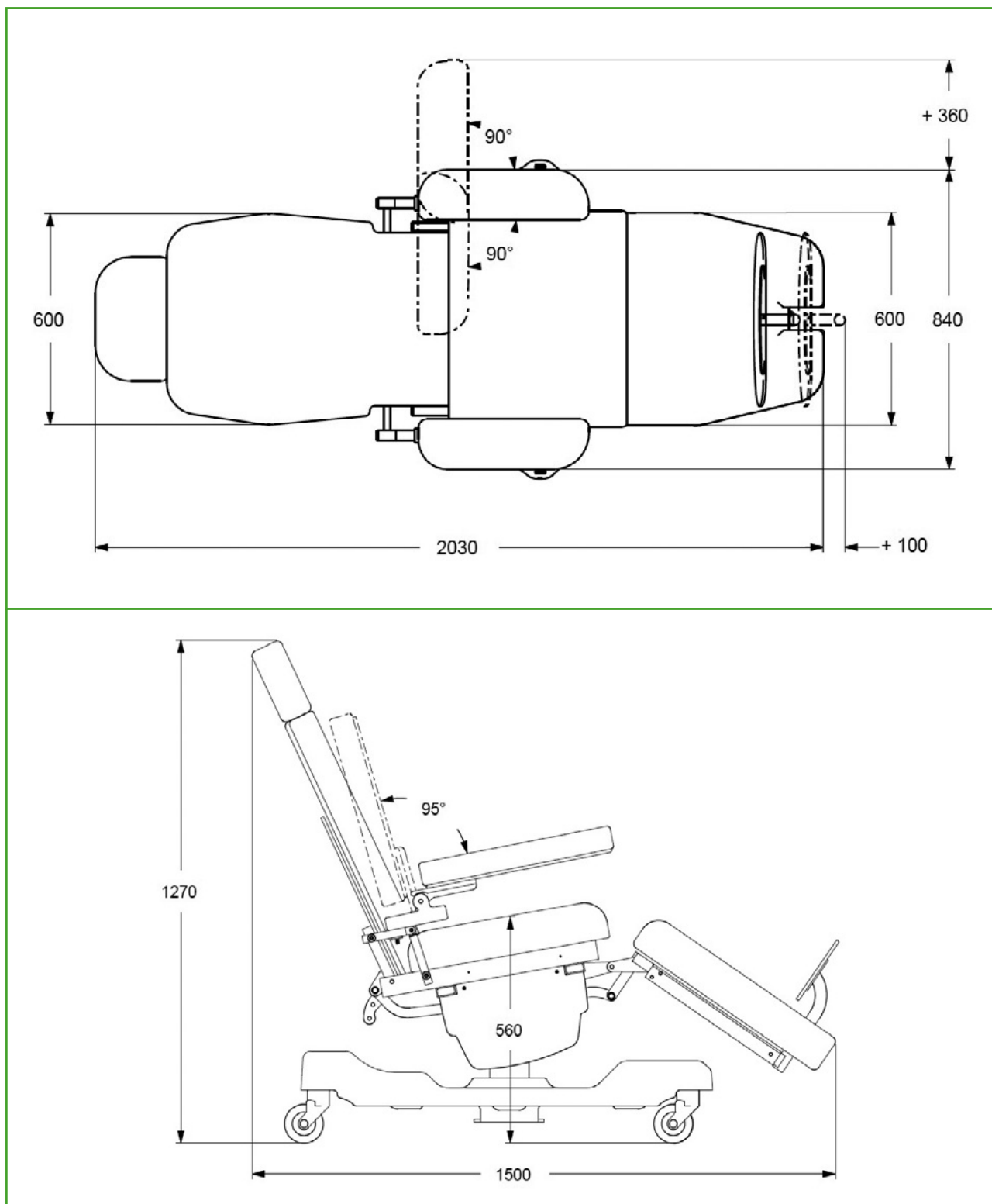
Type B
Canada
and USA



Type G
UK plug



Dimensions



www.gardhenbalance.it



Gardhen Balance S.r.l.

Via G. Luraghi c/o Consorzio Il Sole - lotto S -
80038 Pomigliano d'Arco (NA) - Italy
Tel. +39.081.8692160 pbx - Fax +39.081.8692460
E-mail: info@gardhenbalance.it
PEC: gardhenbalance@pec.it

Images reproduced in this sheet are for reference only and dimensional values are nominal. It is the manufacturer's right to make changes to the designs without prior notice. Refer to the accessories catalog and/or commercial proposals for the identification of standard equipment and the selection of any additional components. In case of discrepant data, the contents of the commercial proposals shall prevail.

Dep. EN_82 rev. 05/07/2024