

Stephen H Comfort 9.0

Multifunctional chair



SEATING

Frequent usage

Multifunctional
Infusion therapy
Oncology
Day Hospital
Blood donor
Emergency
Dialysis
Patient's transport
Dermatology
Cosmetics



COMFORT &
TECHNOLOGY

a longer than usual lying surface

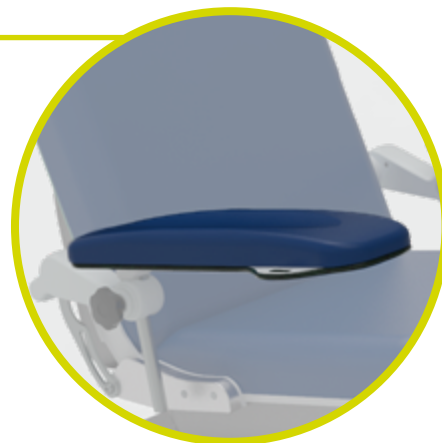


www.gardenbalance.it



Adjustable in height and suitable for patient of different sizes.

Multi-adjustable ergonomic armrests with hand control support.



Ergonomic backrest as its padding has different densities to ensure high comfort.

Wheels with braking and directional system activated by bilateral levers.

Base-protecting covers made of ABS, with smooth surface and easily sanitized.

The legrest folds **entirely underneath** the seat. It allows the patient to sit from the front with no obstacles. Legrest with **higher extension** (525 mm).



Longer legrest extension

The legrest has been designed with a greater extension, reaching a maximum extension of 525 mm, this innovation, combined with the optimized accommodation, guarantees additional comfort for the patient; specifically to those of tall stature and with reduced mobility.



Improved seating

Thanks to an advanced geometric solution, the "leg" section disappears under the seat when placed vertically (90°). This feature allows the patient to sit on the chair while the lower limbs will stay perfectly perpendicular to the seat itself resulting in many benefits for the posture. Therefore, all patients, even those with mobility difficulties, will be able to easily sit down and get up from the chair, even frontally, assuming a correct posture at all times.

The chair is expressly designed to help the patient to easily seat on the chair. Thanks to the option to place the legrest at 90° the access will be easy also for patient with reduced mobility. The leg section has a longer than usual extension reaching 525mm. This feature is intended to improve the comfort for taller patients. The chair can be equipped with a wide range of accessories (see accessories catalogue).



The illustration, will help to understand the retracting system of the leg section.

Given the absence of protrusions on the seat, the device allows the patient to be able to sit down in a safe way.



Movements

Independent back and leg sections

Independent movements of the back and leg sections are controlled by dedicated buttons on the hand control.



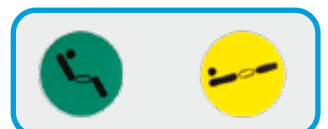
Activation by

Handset



Simultaneous movements

of the back and leg sections are controlled thanks to memory buttons on the handset.





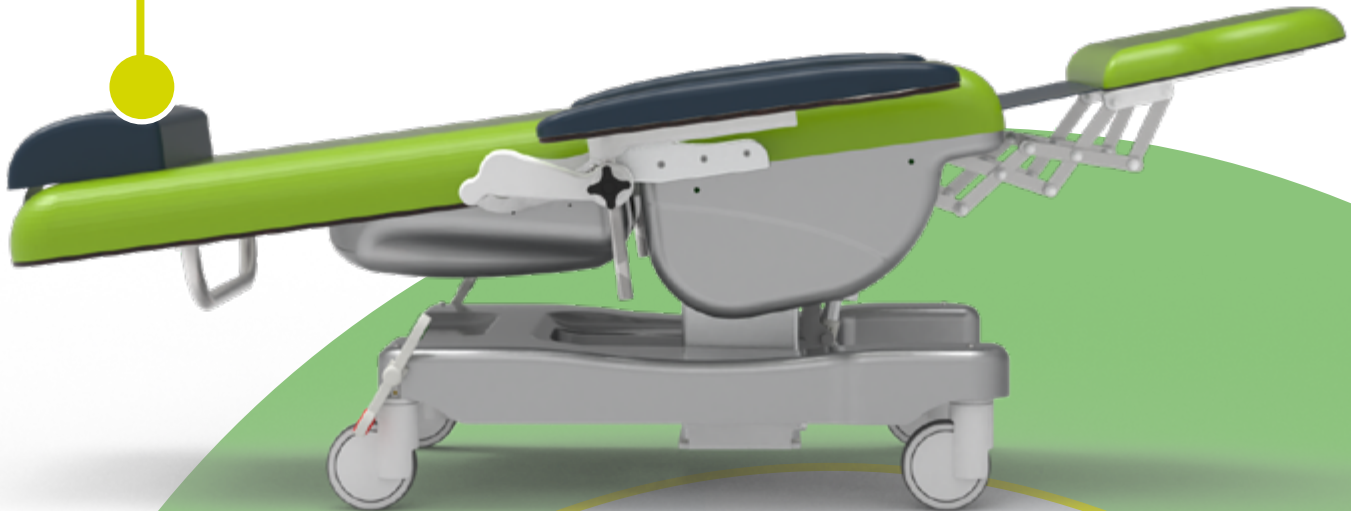
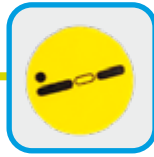
Movements

Trendelenburg

The Trendelenburg position can be obtained at the dedicated button on the hand control.

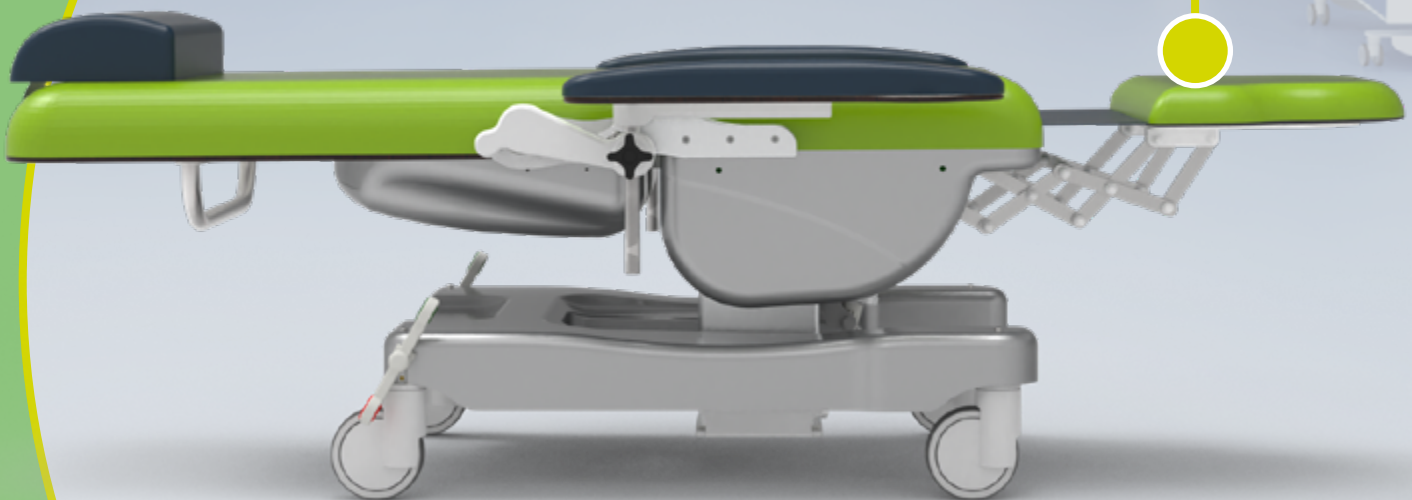
Activation by

Handset



Clinostatic position

Another example of movement





Multi-adjustable armrests

Armrests ergonomic armrests equipped with special manual multiple adjustment mechanism for positioning in multiple directions. In addition, the support placed bilaterally on the armrests (equipment code AC25P) allows convenient storage of the hand control when not in use.



Synchronized with the backrest



Swivable



Height adjustable



Removable



Tiltable



Overturnable



Other features of the medical device

- Painted steel frame(Anti-tilt) in thermosetting and antibacterial powders. Wide range of colours.
- Lying surface divided in 3 sections: backrest, seat and leg.
- Motorized Trendelenburg position - Equipment code AC35/1.
- Height adjustment - Equipment code AC28/200-400.
- Two motors allow to move the back section and the leg section independently and simultaneously - Equipment code AC12.
- Leg section: 90° to the seat - Equipment code AC63.
- The armrests can be removed, tilted, adjusted in height, overturned - Equipment code AC30/C1.
- Additional headrest adjustable in height with special safety lock to prevent removal - Equipment code AC27.
- Leatherette upholstery, elastic, extremely comfortable and completely seamless. The latter feature prevents bacteria proliferation. It can be easily sanitized with the most common detergents. The upholstery is also flame retardant and complies with UNI 9175/87 e 9175FA- 1/94 class 11M (wide range of colours at page 6) - Equipment code AC87/1.
- No. 4 wheels Ø 100 mm antistatic, sturdy, stainless and swivable.
- Directional braking system - Equipment code AC7PIG.
- Chair's movements are controlled by handset with a 3,5 mtl coiled cable. The handset is user friendly and has visual pictograms useful for partially sighted people. Handset is equipped by 10 buttons with 2 memories. For patient's safety purpose the handset is provided with an inhibition key - Equipment code AC34P.
- Insulation IP66.
- Transport handle in stainless steel for H Comfort - Equipment code AC56/C.
- Handset supports - Equipment code AC25P.
- Soft foam cushions.
- ABS cover for the base section - Equipment code AC83/C.
- ABS cover for the seat - Equipment code AC86/C.
- ABS cover for the back section - Equipment code AC86/C.

Do you want to change the colour of the upholstery and frame?

Frame or click the QR codes and discover how to personalise your device by consulting our colour cards*.

*If no preference is expressed, the device will be delivered in the available colour.

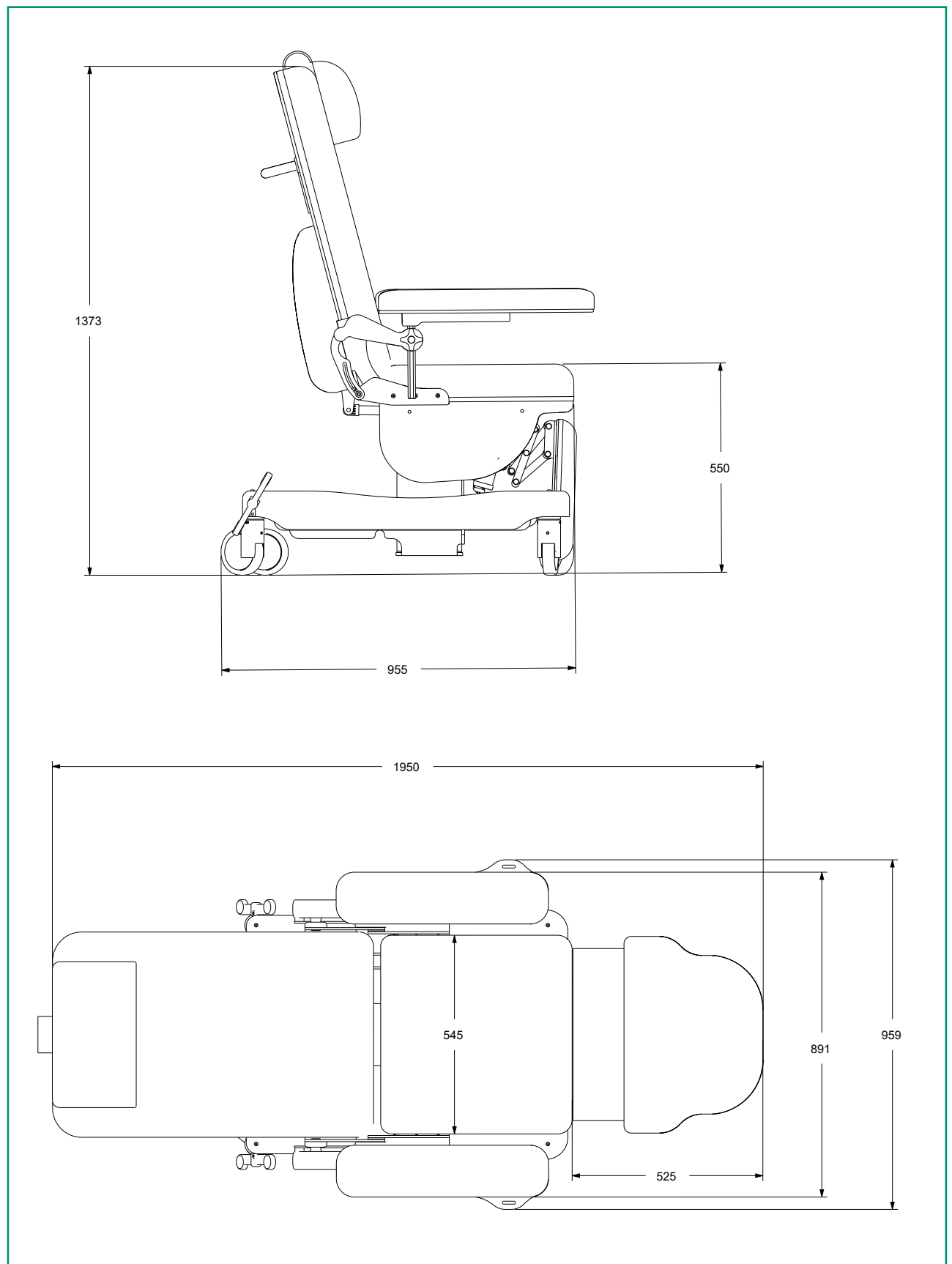
**Leatherette
Upholstery**

**Silicone
Upholstery**

Frame



Dimensions



The dimensions showed on the catalogue are purely illustrative and they may go through changes.



Technical sheet

CND/EMDN	V08020101
UDI di Base	805771740POLPE
N. Progressive/R	2441554
GMDN Code	38447
ID Code	GB0004.SP-9 Painted steel
Intended use	Multifunctional chair
Manufacturer	GARDHEN BALANCE SRL
Overall weight	70 kg
Wheels	Nr.4 swivable wheels 100 mm, stainless with braking system
Power	100 - 240 Vac 50/60 Hz
Electric motors	Low voltage (24 V)
Max electrical input	4A
Insulation	IP44
Max load	200 kg
Safety working load	235 kg

Main cord



Type F
Schuko



Type L
16A



Type I
Australia



Type B
Canada and USA



Type G
UK plug

www.gardhenbalance.it



Gardhen Balance

Via G. Luraghi c/o Consorzio Il Sole - lotto S -
80038 Pomigliano d'Arco (NA) - Italy
Tel. +39.081.8692160 pbx - Fax +39.081.8692460
E-mail: info@gardhenbalance.it
PEC: gardhenbalance@pec.it

Images reproduced in this sheet are purely indicative and dimensional values are nominal. It is the manufacturer's right to make changes to the designs without prior notice. Refer to the accessories catalog and/or commercial proposals for identification of standard equipment and selection of any additional components. In case of discrepant data, the content of the commercial proposals shall prevail.
Dep. EN_353 rev. 17/05/2024