

# Stephen H Comfort 2.0

Multifunctional chair



SEATING

Frequent Usage

- Chemotherapy
- Infusion therapy
- Day Hospital
- Blood Donation
- Blood Sample
- Emergency Room
- Dialysis
- Patient transport
- Dermatology/  
Cosmetics
- Multifunctional



High  
**COMFORT**

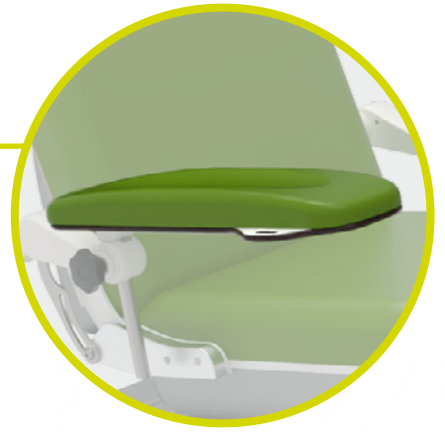
Inpatient and outpatient therapy



[www.gardenbalance.it](http://www.gardenbalance.it)



**Multi-adjustable ergonomic armrests with hand control support.**



**Wheels with braking system activated by bilateral levers.**

**Base-protecting covers made of ABS, with smooth surface and easily sanitized.**



## Multi-adjustable armrests

Armrests ergonomic armrests equipped with special manual multiple adjustment mechanism for positioning in multiple directions. In addition, the support placed bilaterally on the armrests (equipment code AC25P) allows convenient storage of the hand control when not in use.



**Synchronized with the backrest**



**Swivable**



**Height adjustable**



**Removable**



**Tiltable**



**Overturnable**



## Movements

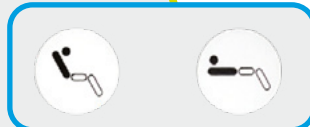
### Independent back and leg sections

Independent movements of the back and leg sections are controlled by dedicated buttons on the hand control.



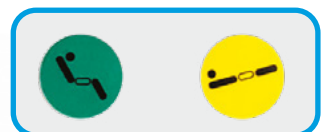
Activation by

**Handset**



### Simultaneous movements

of the back and leg sections are controlled thanks to memory buttons on the handset.







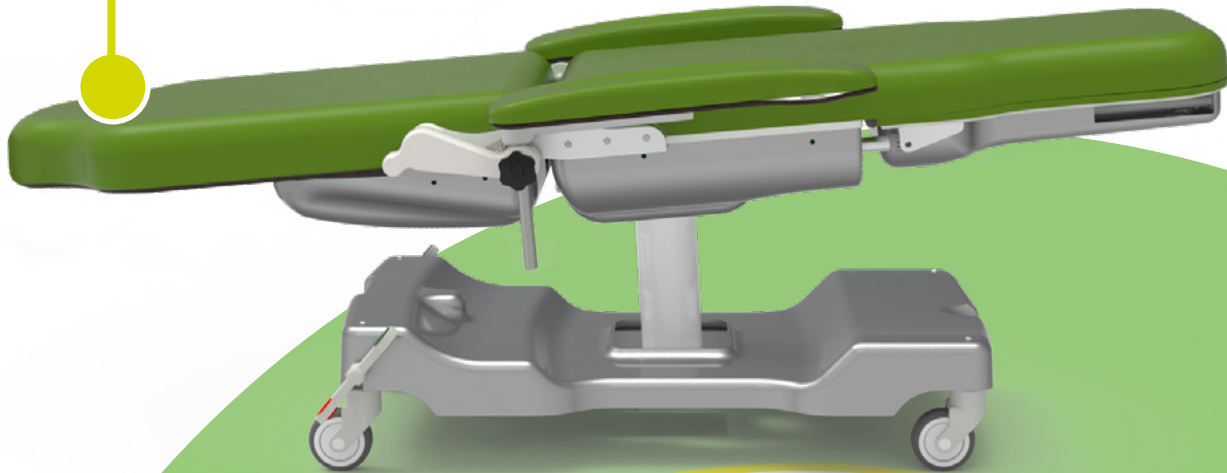
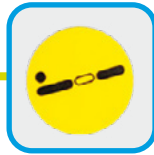
## Movements

### Trendelenburg

The Trendelenburg position can be obtained at the dedicated button on the hand control.

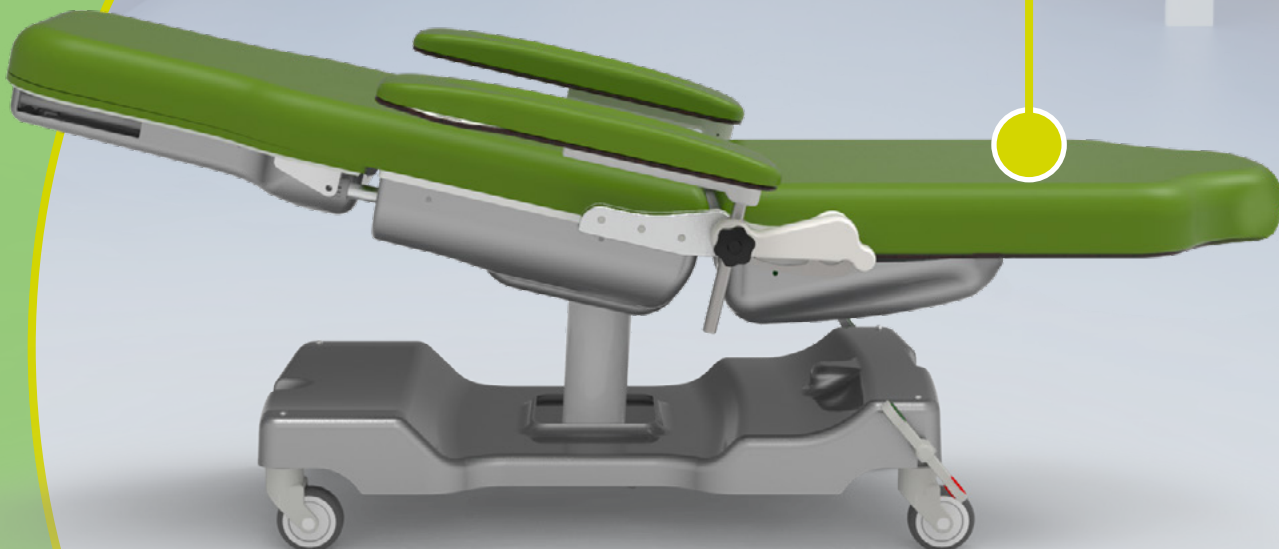
Activation by

**Handset**



### Schock position

Movement achievable with motorized seating (accessory)





### Other features of the medical device

- Antibacterial thermoset powder coated steel frame with wide assortment of colors.
- Top divided into 3 sections: back, seat and legs.
- Simultaneous movement of back and leg sections by 1 motor.
- Trendelenburg position.
- Armrests integral to the backrest movement, with swivel function, tiltable up/down, 90° tilt and height adjustment; (see accessories catalog for other armrest type).
- No. 4 durable, antistatic, stainless, swivel wheels Ø 100 mm.
- Simultaneous brake galvanized steel rear wheels - Equipment code AC7P1G.
- All chair movements are controlled by a perimeter hand control equipped with a 3.5 m coiled cable. The hand control is easy to use as it is made with large raised pictograms and is also suitable for visually impaired patients. The hand control has 10 keys with 2 memories. For patient safety, the hand control is equipped with a key for control inhibition - Equipment code AC34P. IP66 insulation.
- Double-sided push-button panel support - Equipment code AC25P.
- ABS cover for base - Equipment code AC83.
- ABS seat cover - Equipment code AC84C.
- ABS cover for leg rest - Equipment code AC85C.
- ABS backrest cover - Equipment code AC86C.
- Cushions made of soft foam.
- Fire-retardant leatherette upholstery UNI 9175/87 and 9175FA-1/94 class 1IM - Equipment code AC87/1.

#### Do you want to change the color of the upholstery and frame?

Frame or click the QR codes and find out how to customize your device by browsing our color cards\*.

\*If no preference is expressed, the device will be supplied with the available color.

Coating  
Leatherette

Upholstery  
Silicon

Frame



#### Do you want to implement the device?

Frame the QR code and discover all the accessories available by browsing the catalog.



## Technical Sheet

CND/EMDN Code	V08020101
GMDN Code	38447
No. progressive/R	2234613/R
UDI-DI di Base	805771740POLPE
ID Product	GB0004.BP-2 Painted steel GB0004.BS-2 Stainless steel GB0004.SP-2 Painted steel GB0004.SS-2 Stainless steel
Intended Use	Multifunctional chair
Manufacturer	GARDHEN BILANCE SRL
Total weight	Standard 70 kg / Bariatric 100 kg
Wheels	No. 4 stainless swiveling 100 mm with braking system
Power	100 - 240 Vac 50/60 Hz
Electric motors	Low voltage (24 V)
Max absorption	4A
Insulation	IP44
Max load capacity	Standard 200 kg / Bariatric 300 kg
Safe Workload	Standard 235 kg / Bariatric 335 kg

## Main cord



**Type F**  
**Schuko**



**Type L**  
**16A**



**Type I**  
**Australia**



**Type B**  
**Canada and USA**

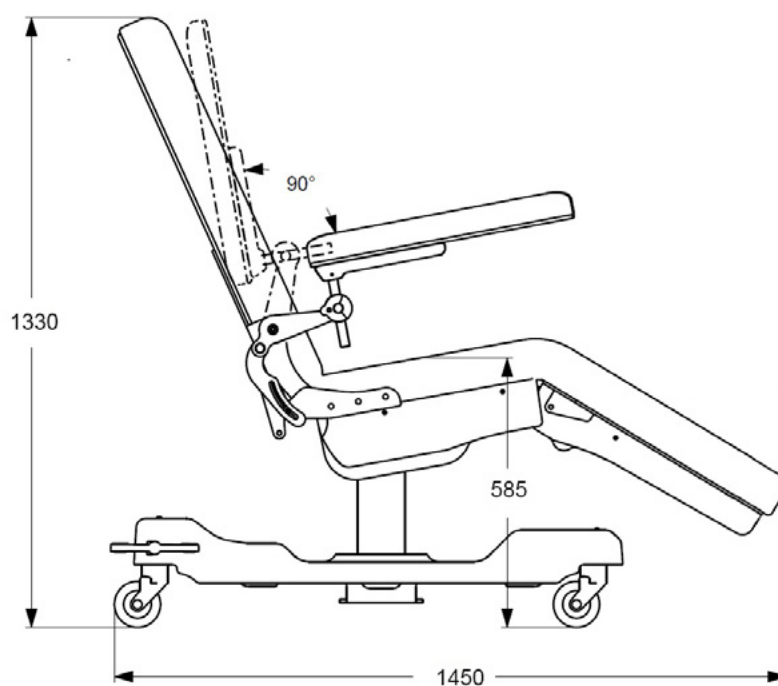
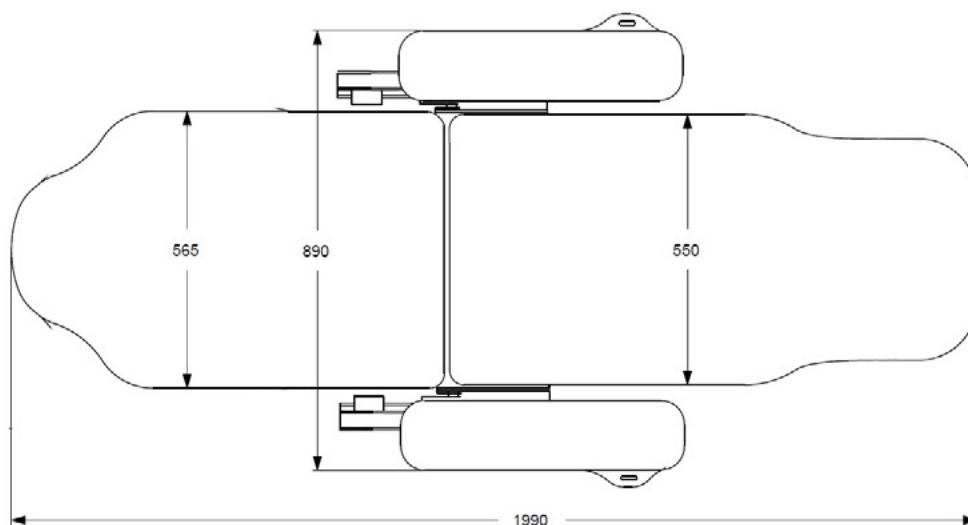


**Type G**  
**UK plug**



## Dimensions

### STANDARD VERSION

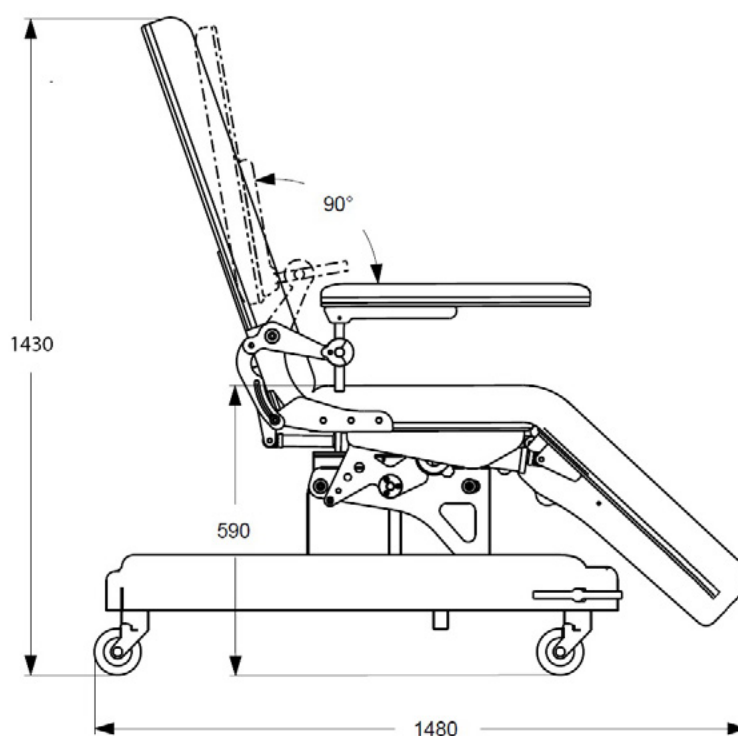
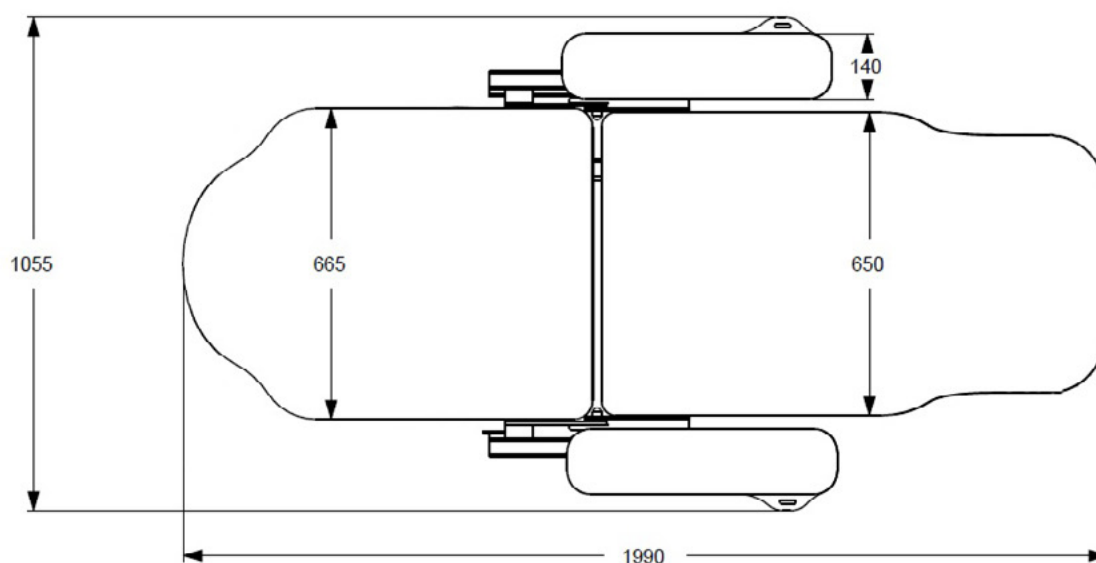






## Dimensions

### BARIATRIC VERSION



[www.gardhenbalance.it](http://www.gardhenbalance.it)



### Gardhen Balance

Via G. Luraghi c/o Consorzio Il Sole - lotto S -  
80038 Pomigliano d'Arco (NA) - Italy  
Tel. +39.081.8692160 pbx - Fax +39.081.8692460  
E-mail: [info@gardhenbalance.it](mailto:info@gardhenbalance.it)  
PEC: [gardhenbalance@pec.it](mailto:gardhenbalance@pec.it)

Images reproduced in this sheet are purely indicative and dimensional values are nominal. It is the manufacturer's right to make changes to the designs without prior notice. Refer to the accessories catalog and/or commercial proposals for identification of standard equipment and selection of any additional components. In case of discrepant data, the content of the commercial proposals shall prevail.  
Dep. EN\_204 rev. 17/05/2024