

PH Chair

Multifunctional blood drawing chair

1



Functional
and safe



FREQUENT USAGE

| | |
|---------------------------|------|
| ambulatory | ★★★★ |
| transfusional | ★★★★ |
| blood drawing | ★★★★ |
| infusion therapy | ★★★★ |
| dialysis | ★★★★ |
| patient's incoming | ★★★★ |

*** = very frequently used
 ** = frequently used
 * = rarely used

COLOUR CHART

Upholstery:

| |
|---------------------|
| Green |
| Black |
| standard colour |
| Blue |
| Light blue |
| Red |
| Orange |
| Light yellow |
| Beige |

Standard features

- Reclinable servo-assisted backrest -10° -80° h85 cm;
- Servo-assisted legrest synchronized with the movement of the backrest 0-90°;
- Adjustment of leg and back section through gas spring activated with an easy accessible lever located under the seat;
- Pushing handle behind the backrest;
- No.4 swivable 125mm wheels with brake. Glides are available upon request;
- Anatomical padding in expanded foam with different degrees of density;
- Max load capacity 180kg;
- Structure in painted steel painted with epoxy powders;
- 45x15cm armrests adjustable in height;
- Reinforced VTP upholstery PL+PV flame retardant class 11M.



Accessories

GBP0801.AP1



Retractable footrest.

GBP0801.AP2



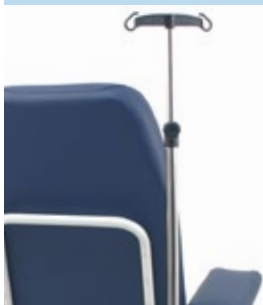
IV pole in steel, shaped and with 2 hooks.

GBP0801.AP3



IV pole in chromed steel with 2 hooks.

GBP0801.AP4



Fixed 25 mm housing for IV pole.

GBP0801.AP5



25 mm diam. clamp for IV pole.

GBP0801.AP15



Second lever for backrest/legrest movement.

GBP0801.AP16



Directional wheels couple diam. 125 mm.

GBP0801.AP17



Removable headrest. It can be adjusted through Velcro strap.

GBP0801.AP18



Independent movement of leg and back through a second lever.

GBP0801.AP19



Paper roll holder in chromed steel.

GBP0801.AP20



Document holder located behind the backrest.

GBP0801.AP21



Plate with customizable logo or script located behind the backrest.

Accessories



GBP0801.AP22



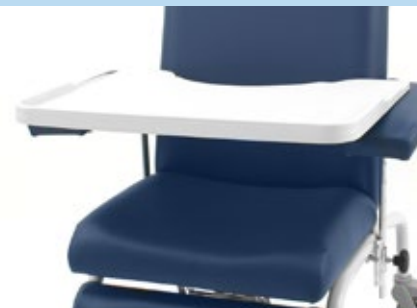
Basket for oxygen tank.

GBP0801.AP23



Hook for drainage bag.

GBP0801.AP24



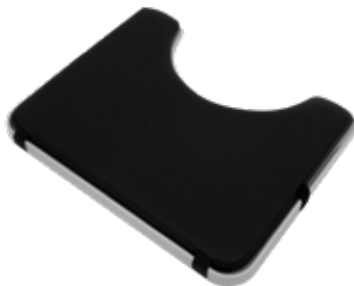
Left or right tiltable table
70x47cm with shaped edge.

GBP0801.AP25



Padded removable table
upholstered in black leatherette.

GBP0801.AP26



Removable padding upholstered
in black leatherette for table's
edges. Equipment code
GBP0801.AP24

GBP0801.AP32



45x15 cm armrests. Adjustable
in height.

Available configurations



Seat width: **55 cm**

Seat depth: **45 cm**

Size: **70 cm**

Weight: **34 kg**

GBP0802

For certifications please
refer to "Certifications
and Quality system" section

Pictures contained in this brochure is for illustrative purpose only.
The manufacturer reserves the right to modify the projects without notice.
For accessories identification please refer to the accessory catalogue or commercial offer.
When data are different please refer to commercial offer.

