

Chair 801 PH

Therapy chair **with wheels**
back and leg **moveable with synchronized system**



SEATING

Frequent Usage

Therapy
Relax
Reduced Footprint



FEATURES & SAFETY

Outpatient and inpatient therapy



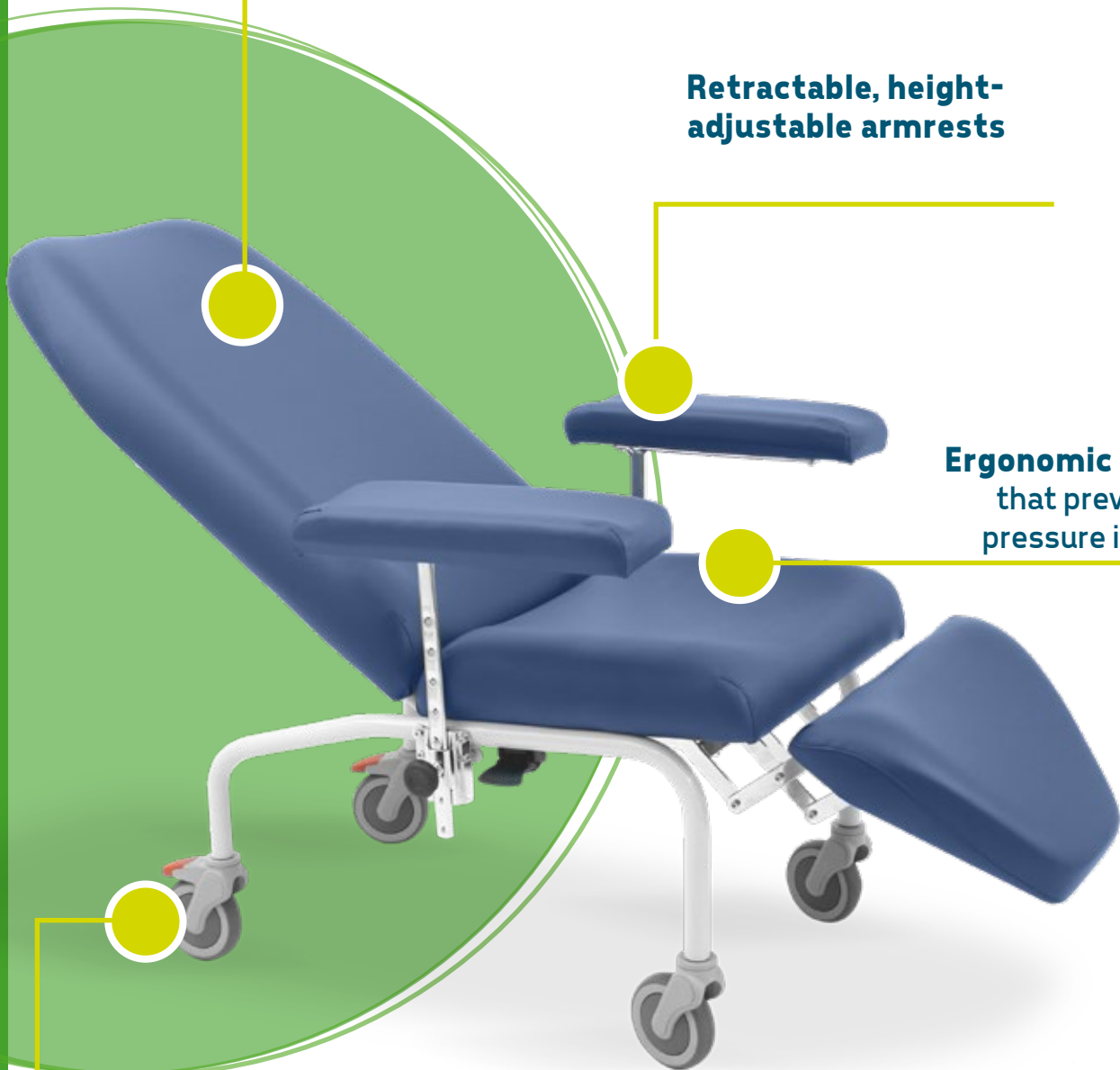
www.gardhenbalance.it



3 sections
back and leg moveable with
synchronized system

**Retractable, height-
adjustable armrests**

Ergonomic seat
that prevents
pressure injury



Swivel casters with brakes
stabilize the chair firmly on the ground



Characteristics of the medical device

- Chair withdrawal 3 sections
- Reclining backrest by gas spring controlled by special lever located under the easily accessible seat - h 85 cm - tot 125 cm
- Power-assisted leg rest synchronized to the adjustable backrest by gas spring controlled by special lever located under the seat that can be easily reached
- Height-adjustable 45 x 15 cm retractable, removable armrests
- 4 wheels 125 mm swivel casters with brake
- Push handle
- Seat width 55 cm, depth 45 m, footprint 70 cm
- Overall length 90-175 cm
- Anatomical back, seat and leg rest padding with differentiated density
- Upholstery pv fire retardant class 11M





GBP0801.AP1



Retractable footrest.

GBP0801.AP2



IV pole chrome-plated stainless steel with 2 hooks

GBP0801.AP27



IV pole stainless steel with 2 hooks

GBP0801.AP4



Fixed 25-mm-diameter housing for IV pole.

**GBP0801.AP16**

Pair of front directional wheels. 125 mm diameter.

GBP0801.AP17

Headrest removable and adjustable by Velcro strap.

GBP0801.AP19

Chrome-plated steel roll holder

GBP0801.AP20

Document pocket



GBP0801.AP21



Digital lettering and logo plaque

GBP0801.AP23



Support hook for drainage bag.

GBP0801.AP22

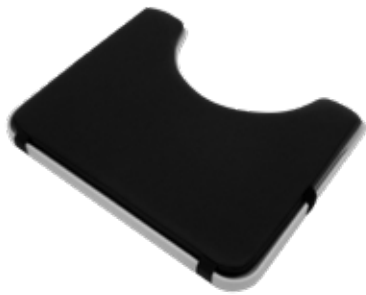


Oxygen cylinder holder basket.

GBP0801.AP24



Table 60x47 cm wrap-around recess and folding edges Dx or Sx

**GBP0801.AP26**

Removable black leatherette upholstery for hollow coffee table (Code GBP0801.AP24).

GBP0801.AP25

Full black leatherette upholstery for coffee table GBP0801.AP24.



Chair 801 PH

Upholstery colors

The upholstery of the chair is covered with a versatile and highly durable fabric with properties: antibacterial, Class 11M fire retardant, antifungal, environmentally friendly, latex free/phthalate free.

 Blue (standard)

 Light Blue

 Light Yellow

 Green

 Red

 Beige

 Black

 Orange

Technical Sheet

CHAIR 801 PH

CND and EMDN	V080202
GMDN code	38448
UDI-DI di base	805771740POLPE
No. progressive/R	2538862/R
ID Product	GBP0802
Intended Use	Manual medical chair
Weight	34 kg
Max load capacity	180 kg

www.gardhenbalance.it



Gardhen Balance S.r.l

Via G. Luraghi c/o Consorzio Il Sole - lotto S - 80038
Pomigliano d'Arco (NA) - Italy
Tel. +39.081.8692160 pbx - Fax +39.081.8692460
Email: info@gardhenbalance.it
PEC: gardhenbalance@pec.it

Images reproduced in this sheet are for reference only and dimensional values are nominal. It is the manufacturer's right to make changes to the designs without prior notice. Refer to the optional components catalog and/or commercial proposals for identification of standard equipment and selection of any additional components. In case of discrepant data, the content of the commercial proposals shall prevail.
Dep. EN 5 rev. 06/05/2024

