

Mosè Bariatric

Bed bariatric version



ALL CLINICAL
AREAS

Frequent usage

Hospitalization
Semi-intensive care unit
Bariatric



**DESIGN &
TECHNOLOGY**

italian in the world

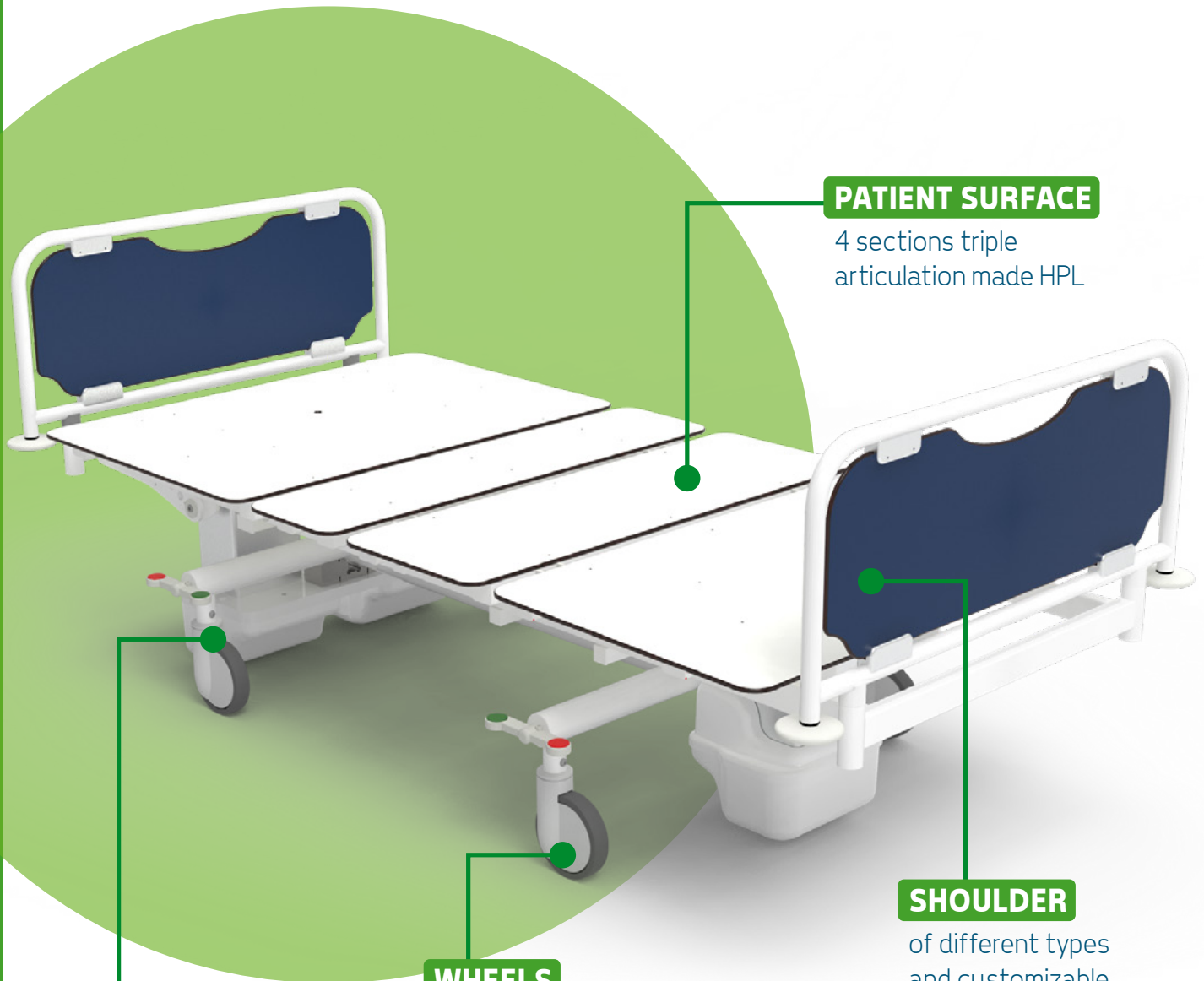


gardhen
balance

www.gardhenbalance.it



Standard equipment



PATIENT SURFACE

4 sections triple articulation made HPL

SHOULDER

of different types and customizable upon request, equipped with anti-sliding safety lock.

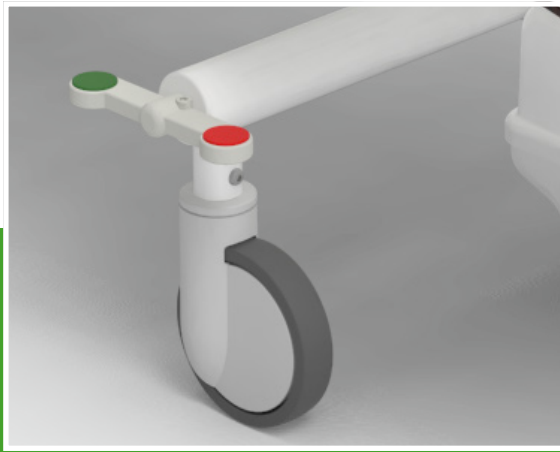
WHEELS

with 150 mm diameter, optimal for transport with patient on board. The directional system facilitates maneuverability.

BRAKE

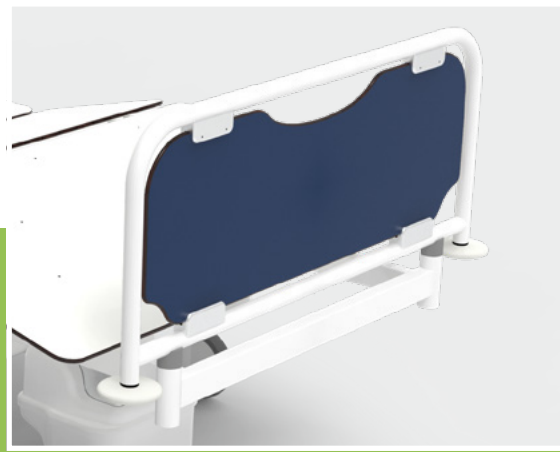
centralized with directional system activated by bilateral lever.





Braking system

Centralized directional braking system. Operation is via bilateral anteroposterior pedals
Equipment code AC7L2G



Shoulder

Headboard and footboard shoulders made of steel with HPL center panels, available in blue (see photo) or white



Quick release of the backrest

To facilitate the CPR maneuver in case of emergency
Equipment code AC8L



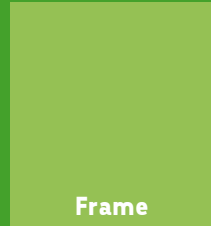
Push button panel

Perimeter 10-button push-button panel for handling equipped with 3.5 m coiled cable

Do you want to change the color of the frame?

Frame or click the QR code and find out how to personalize the device by consulting our color cards*.

*If no preference is expressed, the device will be supplied with the available color.





Control Panel

It is possible to equip the device with an additional push-button panel to manage the movements. The push-button panel is connected to the device by means of an extendable 3.5 m spiral wire, and is intuitive and practical to use since it is equipped with embossed screen-printed pictograms that identify each movement that can be activated. For patient safety, the hand control is equipped with a key to inhibit the controls (Equipment code AC34L).



MOVEMENTS AND FUNCTIONS

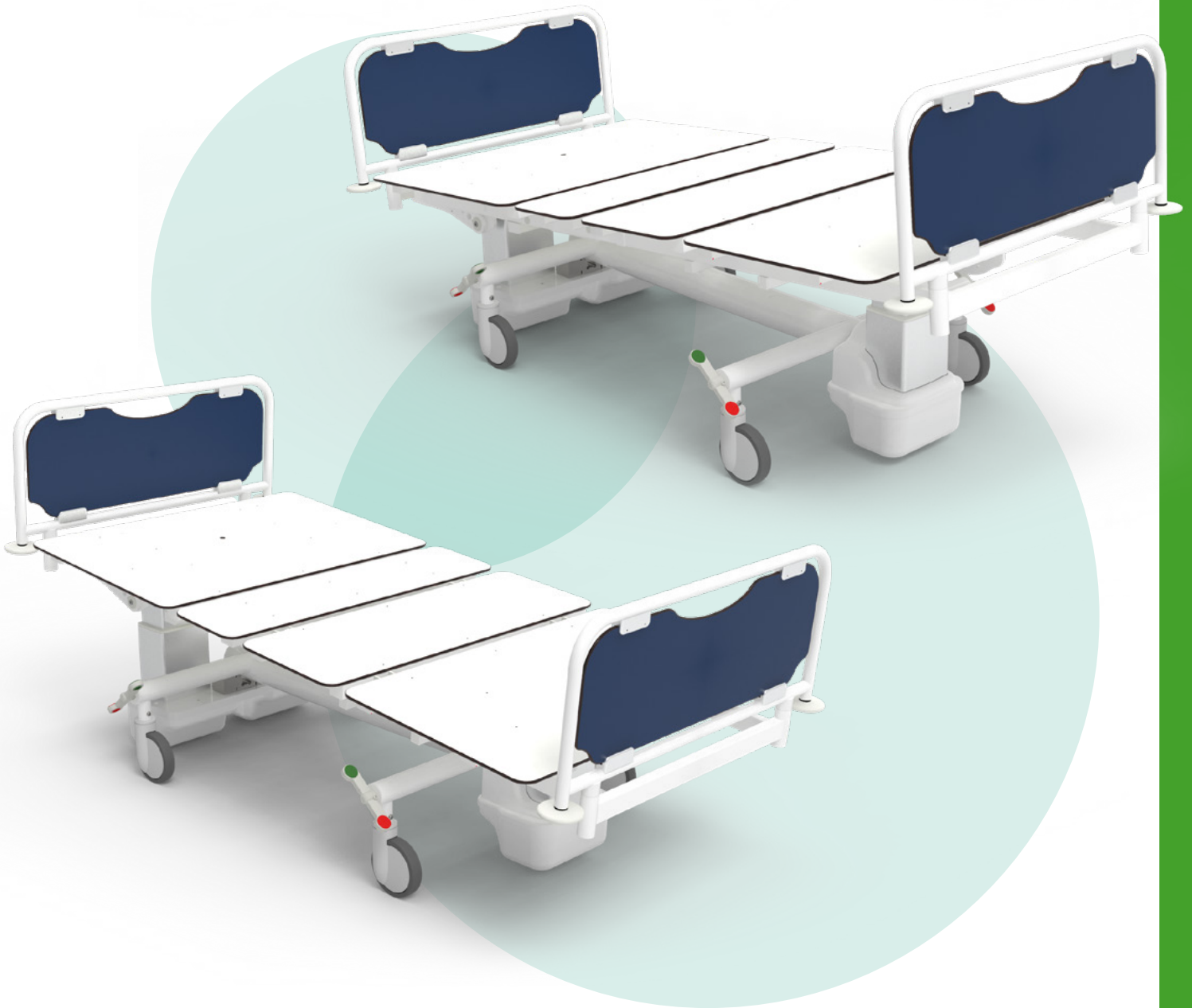
Movement of sections:

- Back section
- Femoral Section
- Simultaneous Back/Femoral Sections
- Variable Height
- Trendelenburg e Trendelenburg inverso

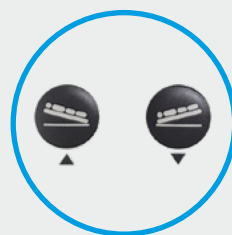


Movements

Trendelenburg and Reverse Trendelenburg



Trendelenburg and Reverse Trendelenburg adjustments are controlled by:



Push button panel



Movements

Variable Height

The bed is height-adjustable by means of three motorized telescopic columns with a rectangular cross-section that allow the height of the top to be adjusted by up to + 400 mm excursion.



Variable height adjustment is controlled by:



Push button panel



Movements

Cardiology chair/chair

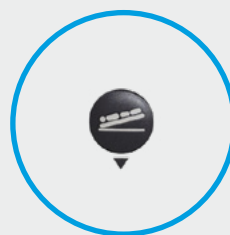
The bed assumes the position "Cardiology Seat/Cardiac Chair" by performing automatic rototranslation of the back section - Equipment code AC62.



The Seated/Cardiac chair position can be obtained by:



Push button panel



Push button panel



Movements

Position CPR

The bed assumes the CPR position such position can be obtained either manually by using the appropriate bilateral levers - Equipment code AC8L, or electrically by using the electrical controls. This function is immediately accessible by the caregiver in order to obtain the emergency position and initiate CPR activities.



The CPR position can be obtained through:



Left bilaterals
(manual activation)



Standard equipment

- Frame made of super-strong steel painted with thermosetting epoxy powder, enriched with antibacterial.
- Mesh top 4 sections triple articulation with HPL panels.
- Motorized back section.
- Motorized femoral section.
- Gas spring-assisted servo leg section synchronous to the movement of the femoral section.
- Variable height via motorized columns with 400 mm range.
- Trendelenburg e Trendelenburg inverso.
- Low-voltage electric motors of the anti-crushing and anti-shearing type.
- Free of parts and components prone to wear and seizure.
- Quick release of the backrest, to facilitate CPR maneuver (Equipment code AC8L).
- Emergency battery (Equipment code AC17L).
- Shoulder made of steel with HPL center panels, available in blue (see photo) or white (Equipment code AC65/4).
- 4 Perimeter bumpers.
- Cable reel (Equipment code AC50L).
- Equipotential node.
- Centralized rapid braking system (4x1) directional, via bilateral pedals (Equipment code AC7L2G).
- 10-button hand control, movements are controlled by perimeter hand control equipped with a 3.5 m coiled cable. The hand control is easy to use as it is made with large raised pictograms and is also suitable for visually impaired patients. IP66 insulation.
- For patient safety, the hand control is equipped with a key for control inhibition (Equipment code AC34L).
- Provision for compass side rails (Equipment code AC21/S).



Do you want to implement the device?

Frame the QR code and discover all accessory by browsing the accessory catalog.



Supervisor Panel

The medical device, upon request, can be equipped with an operator panel (accessory code AC68/3), normally attached to the foot of the bed, for the management of movements and stored positions. Finally, the operator panel has the possibility, if necessary, to inhibit can partially or totally inhibit the patient hand control in order to prevent risks/hazards to the patient himself. Simply turn the appropriate control to activate/deactivate function.



MOVEMENTS AND FUNCTIONS

Movement of sections:

- Drive movements: backrest, femoral, autoconture, variable height, trendelenburg and reverse trendelenburg;

Memory functions:

- Automatic positioning in optimal condition to perform CPR maneuver
- Automatic positioning in Trendelenburg condition
- Automatic positioning in auto-conture condition (chair position)

Safety functions:

- Enabling and disabling partial and/or total disabling of the patient-reserved handset

Foot shoulder safety lock



The medical device, can be equipped with a shoulder foot safety lock to prevent unintentional slipping off (accessory code AC121).



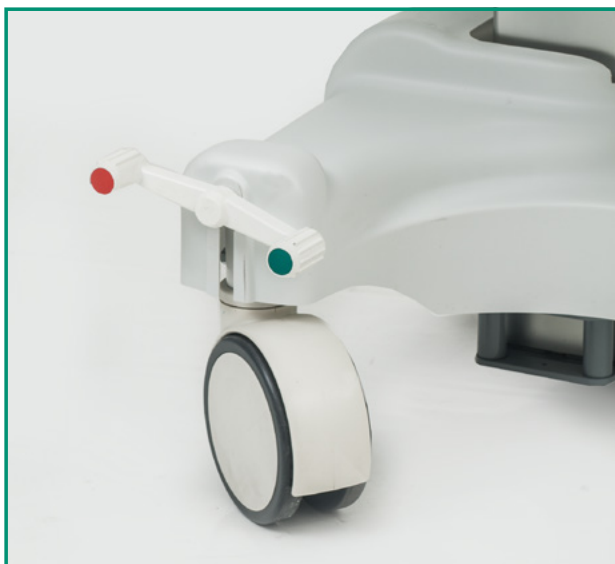


Side rails



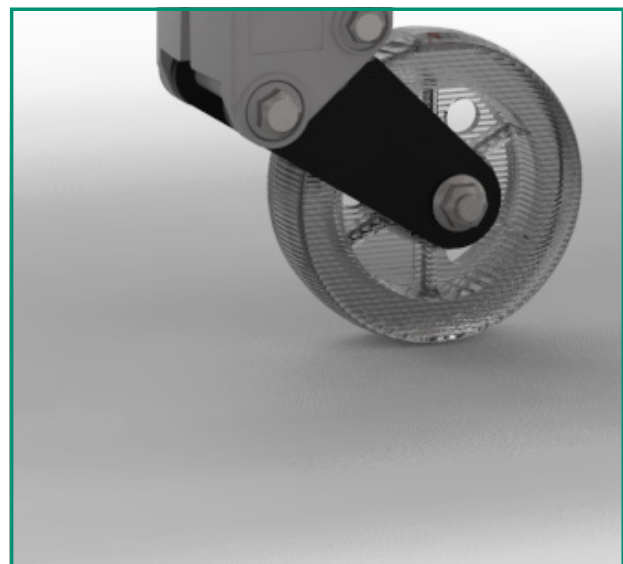
Pair of side rails folding down with compasses. Accessory code AC21/1

Twin wheels



High-capacity twin wheels with a diameter of 150 mm. Accessory code AC5L.

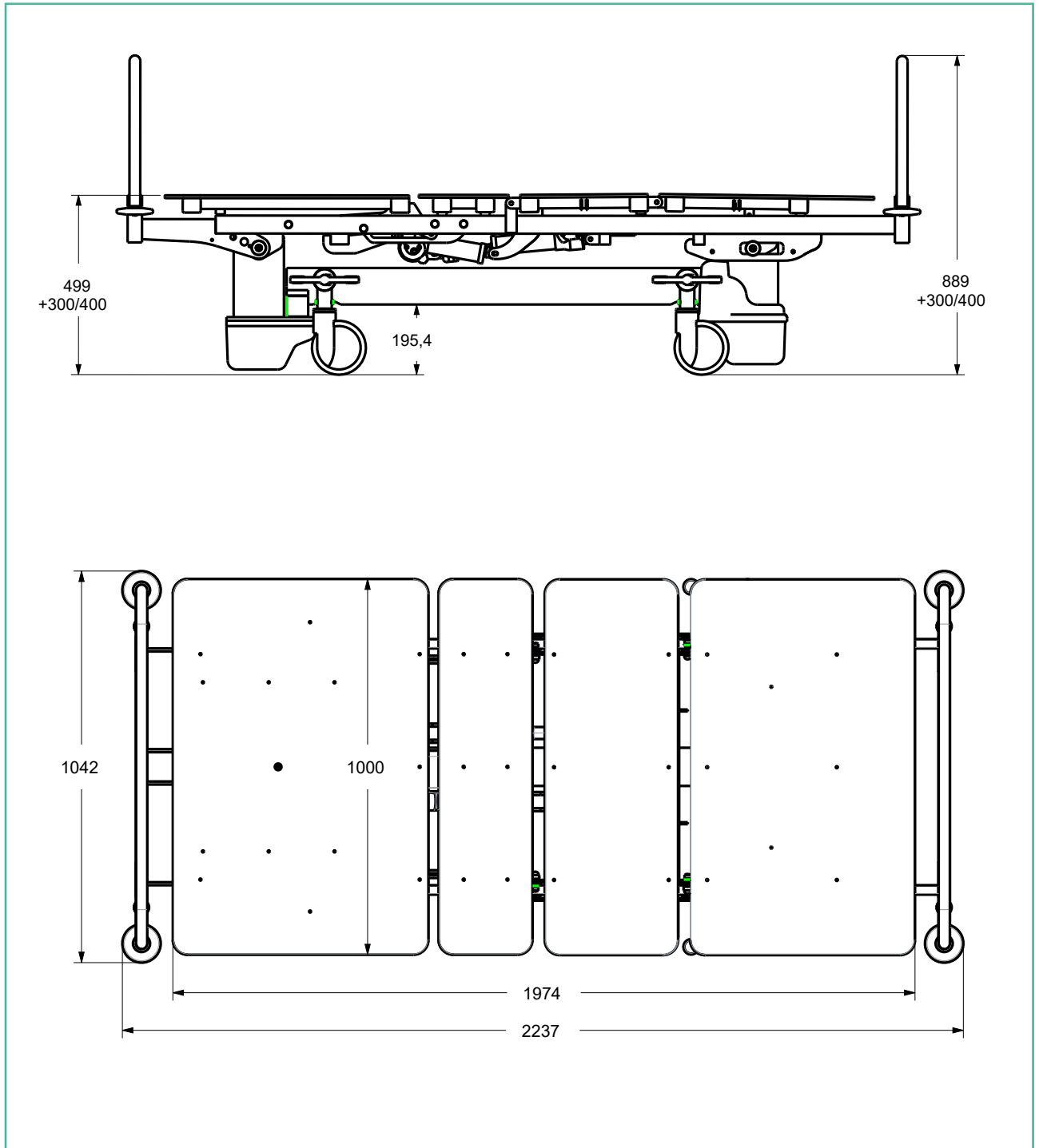
Fifth wheel



Polyurethane fifth wheel, swivel damped and self-leveling. Accessory code AC129/L



Dimensions



Data sheet

CND Code and EMDN	V08060106
GMDN Code	34870
No. progressive/R	2513382/R
Basic UDI-DI	805771740LETNC
Product Code	GB0016.BP Painted steel
Intended Use	Multifunctional bed
Manufacturer	GARDHEN BILANCE SRL
Spare parts availability	Not less than 10 years
Bed weight	168 kg
Type of control	Handset with key
Battery	Autonomy 10 cycles
Power supply	Multivoltage 100-240 Vac 50-60 Hz
Power cord type	Schuko or other upon request
Wheels	No. 4 stainless swivel 150 mm with braking system
Electric motors	Low voltage (24 V)
Max absorption	460 VA
Insulation	IP44
Maximum Scope	300 kg
Safe Workload	335 kg

Main cord



Type F
Schuko



Type L
16A



Type I
Australia



Type B
Canada and USA



Type G
UK plug

Mosè Bariatric

Bed bariatric version



Gardhen Bilance S.r.l.

Via G. Luraghi c/o Consorzio Il Sole - lotto S
80038 Pomigliano d'Arco (NA) - Italy
Tel. +39.081.8692160 pbx - Fax +39.081.8692460
E-mail: info@gardhenbilance.it
PEC: gardhenbilance@pec.it

Images reproduced in this sheet are for reference only and dimensional values are nominal. It is the manufacturer's right to make changes to the designs without prior notice. Refer to the optional components catalog and/or commercial proposals for identification of standard equipment and selection of any additional components. In case of discrepant data, the contents of the commercial proposals shall prevail.

Dep. EN_139 rev. 16/07/2024