



Hoxa PU serie 100

Stools



Benefits

Very comfortable stool with "Soft Touch" polyurethane seat. The Hoxa stools are fitted with a gas spring height adjustment which is operated by a ring mechanism. The Hoxa stools are fitted with a gas spring for the height adjustment which can be operated by a ring mechanism located on the base or underneath the seat. The Hoxa PU is easy to clean and is ideally suited for use in areas where hygiene is of great importance.



Available models



					
100.0	100.1	100.2	100.3	100.4	100.7
SH 34-42 cm	SH 43-58 cm	SH 51-69 cm	SH 68-83 cm	SH 67-92 cm	SH 51-69 cm
WH 60-70 cm	WH 70-80 cm	WH 70-90 cm	WH 80-100 cm	WH 90-110 cm	WH 70-90 cm

SH Eat height

WH Working height

Standard configuration, alternative, accessories

	100.0	100.1	100.2	100.3	100.4	100.7
Polyurethane seat	✓	✓	✓	✓	✓	✓
Aluminium base	✓	✓	✓	✓	✓	✓
Fixed seating angle	✓	✓	✓	✓	✓	✓
Footring		✓	✓	✓	✓	
Height adjustable ring mechanism						✓
Braking wheels	✓	✓	✓	✓	✓	✓
Under load braking wheels	✓	✓	✓	✓	✓	✓
Antistatic wheels	✓	✓	✓	✓	✓	✓
Wheels:						
• Soft castors for hard floors	✓	✓	✓	✓	✓	✓
• Hard castors	✓	✓	✓	✓	✓	✓
• Glides	✓	✓	✓	✓	✓	✓

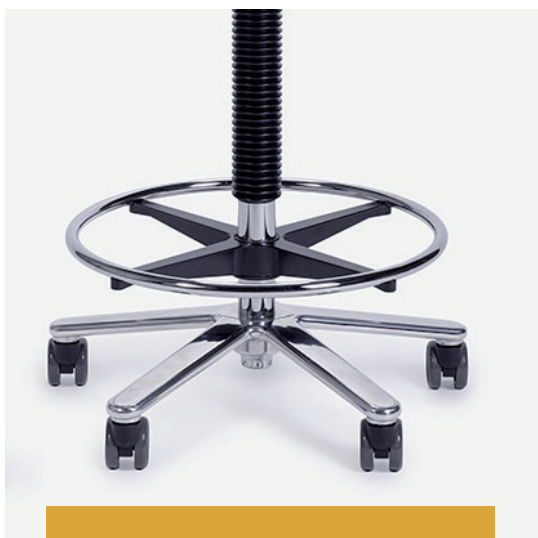
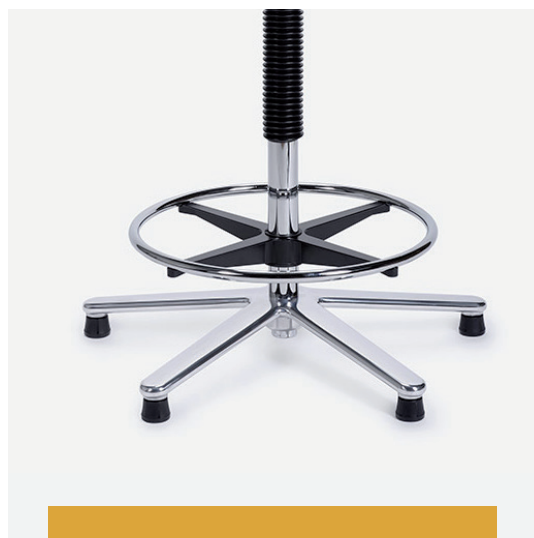
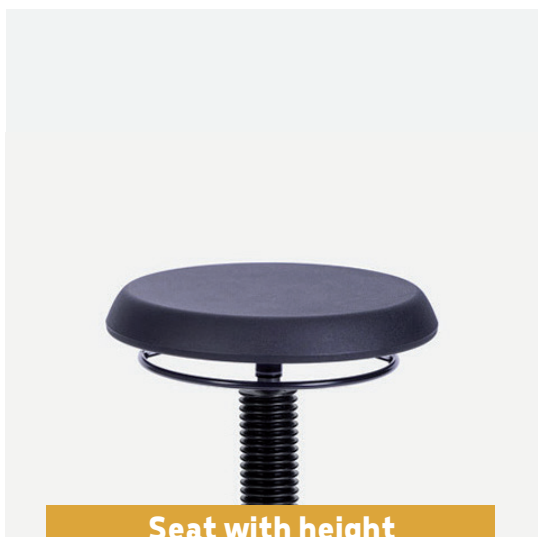
✓ Standard configuration

✓ Alternative

✓ Accessory



Standard configuration, alternative, accessories

**Footring****Glides****Seat with height
adjustment ring**



Hoxa BE serie 680

Stools




Benefits

Stool with beech seat.

The Hoxa stools are fitted with a gas spring for the height adjustment which can be operated by a ring mechanism located on the base or underneath the seat.

The base is of polished aluminum.

Available models

680.0	680.1	680.2	680.3	680.4
 SH 36-44 cm WH 60-70 cm	 SH 41-56 cm WH 70-80 cm	 SH 49-67 cm WH 70-90 cm	 SH 56-81 cm WH 80-100 cm	 SH 65-90 cm WH 90-110 cm

SH Seat height

WH Working height

Standard configuration, alternative, accessories

	680.0	680.1	680.2	680.3	680.4
Seat in beech wood	✓	✓	✓	✓	✓
Aluminium base	✓	✓	✓	✓	✓
Fixed seating angle	✓	✓	✓	✓	✓
Footring		✓	✓	✓	✓
Braking wheels	✓	✓	✓	✓	✓
Under load braking wheels	✓	✓	✓	✓	✓
Wheels:					
• Soft castors for hard floors	✓	✓	✓	✓	✓
• Hard castors	✓	✓	✓	✓	✓
• Glides	✓	✓	✓	✓	✓

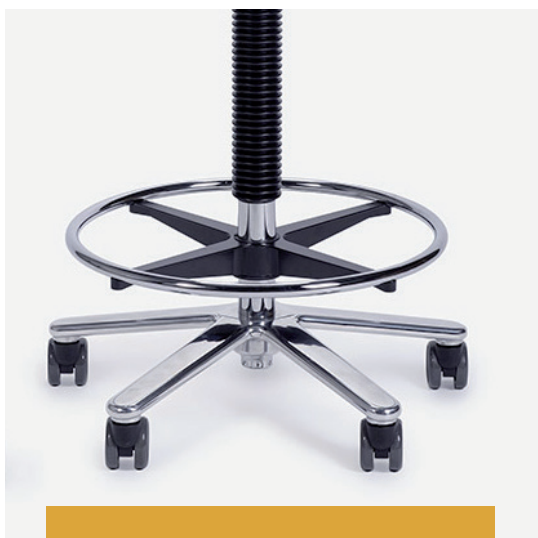
✓ Standard configuration

✓ Alternative

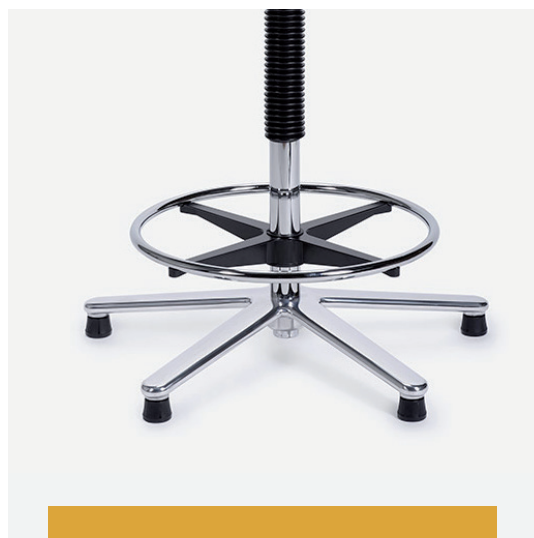
✓ Accessory



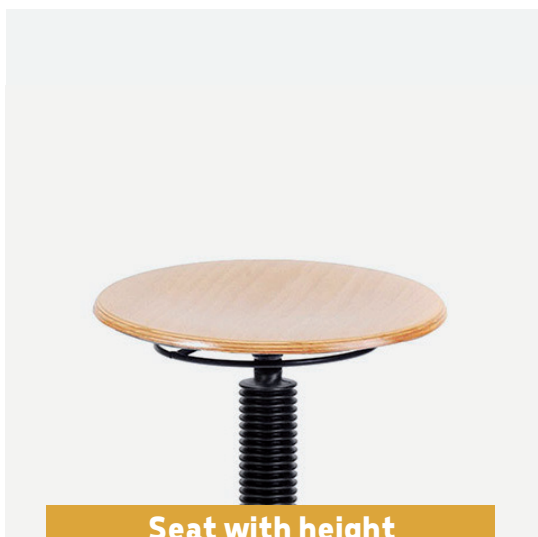
Standard configuration, alternative, accessories



Footring



Glides



**Seat with height
adjustment ring**



Situla serie 696

Stools



Benefits

Height adjustable stool with tractor seat. The polyurethane tractor seat ensures a good connection to the body and therefore this stool is very suitable for those who work whilst seated and want to move around.

Available models

696.0	696.1	696.2	696.3	696.4
SH 34-42 cm WH 60-70 cm	SH 44-59 cm WH 70-80 cm	SH 52-70 cm WH 70-90 cm	SH 59-84 cm WH 80-100 cm	SH 70-95 cm WH 90-110 cm

SH Eat height

WH Working height

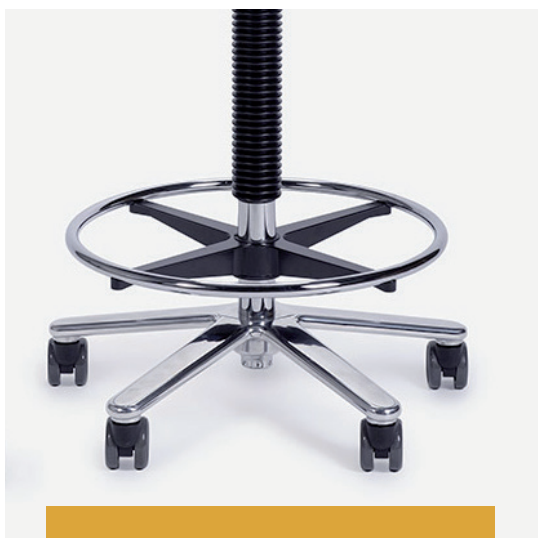
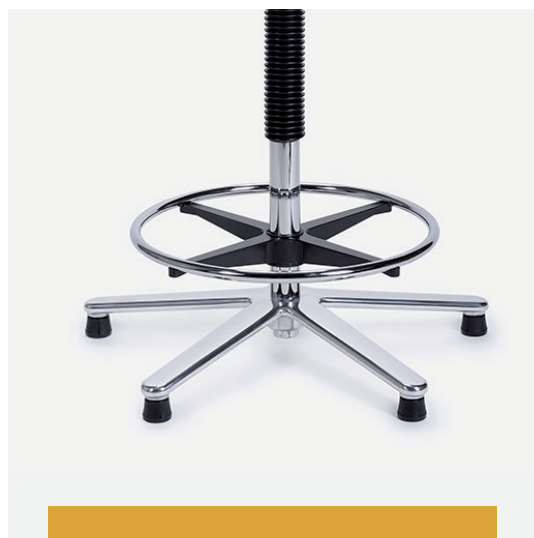
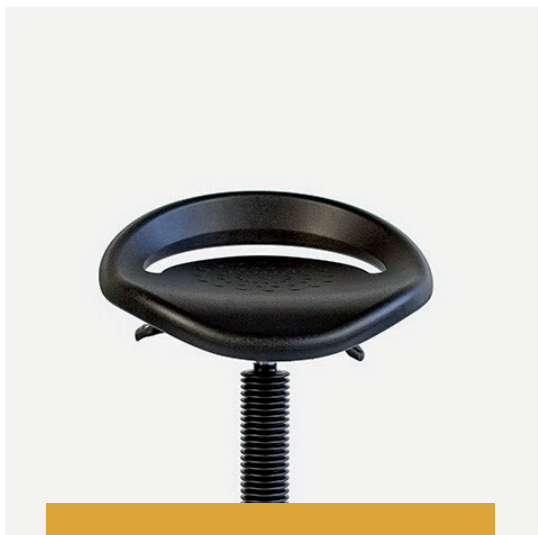
Standard configuration, alternative, accessories

	696.0	696.1	696.2	696.3	696.4
Polyurethane seat	✓	✓	✓	✓	✓
Aluminium base	✓	✓	✓	✓	✓
Fixed seating angle	✓	✓	✓	✓	✓
Footring		✓	✓	✓	✓
Wheels:					
• Soft castors for hard floors	✓	✓	✓	✓	✓
• Hard castors	✓	✓	✓	✓	✓

✓ Standard configuration ✓ Alternative ✓ Accessory



Standard configuration, alternative, accessories

**Footring****Glides****Seduta**