

Freddy Therapy 2.0

THERAPY CARTS FOR THE DRUG DISTRIBUTION



THERAPY CARTS

Frequent use

Emergency Room
Outpatient clinic
Intensive care
Dialysis
Inpatient wards
Specialistics



TECHNOLOGY &
FUNCTIONALITY

able to adapt to all situations



www.gardhenbalance.it



TECHNOLOGY & FUNCTIONALITY

TABLE TOP

made of plastic material without sharp edges for easy cleaning and disinfection

DIN BARS

standard poste on the laterals



WHEELS

highly quiet, rotatable, stainless, with low rolling resistance

BRAKE

double-action with foot pedal

DIN BARS

standard poste on the laterals



Other features of the medical device

- Solid, sturdy construction with steel sheets painted with thermosetting epoxy powder.
- Resistance to tipping.
- Structure lightweight, self-supporting monocoque.
- Large storage capacity.
- 4 castors Ø 125 mm stainless swivel castors including two with dual-action brake with foot pedal. The wheels are non-marking, low rolling resistance, highly silent, sliding on bearings and high capacity.
- Table top made of plastic material without sharp edges for easy cleaning and disinfection.
- Pull-out shelf with push and pull opening.
- Nr 6 Drawers in steel sheet sliding on rails with soft closing (the guides for sliding drawers support up to 60 kg).
- Central locking with key (No. 2 Keys supplied).
- First drawer complete with tamper-evident seal.
- No. 10 self-destructive seals upon removal.
- No. 3 bars DIN standardized on the sides.
- No. 1 bar DIN standardized rear.
- Corner bumpers placed on the 4 corners of the base.
- Push handles built into the cover.
- Optional components made of stainless material, interchangeable and removable without tools.



Drawers with soft close

The drawers are made of sheet steel and slide on slides with soft closing. The drawer runners are extremely strong supporting up to 60 kg.



Do you want to customize the color ?

Frame or click the QR codes and find out how to personalize device by consulting our color cards*.

Frame or click the QR codes and find out how to personalize the device by consulting our color cards*.



Recommended optional components

ACCF1



IV Pole

ACCF2



Waste basket

ACCF3



Manual dispenser

ACCF4



Automatic dispenser

ACCF5



Tank holder

ACCF6



Double defibrillator or monitor tray



Recommended optional components

ACCF7



Bottle rack

ACCF8



Glove rack

ACCF9



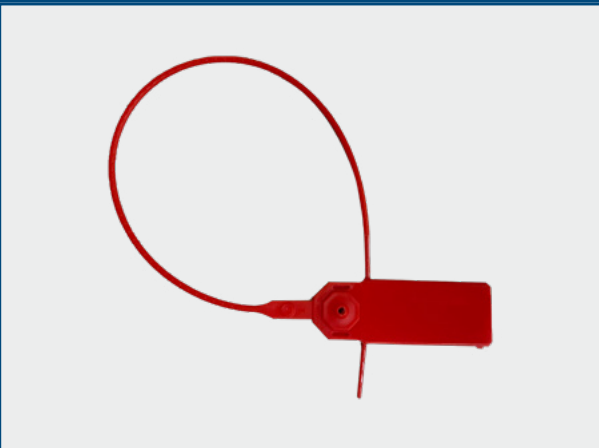
cutter holder

ACCF10



Defibrillator/monitor door plan

ACCF12



Single-use, unnumbered security seal

ACCF13



Numbered disposable security seal



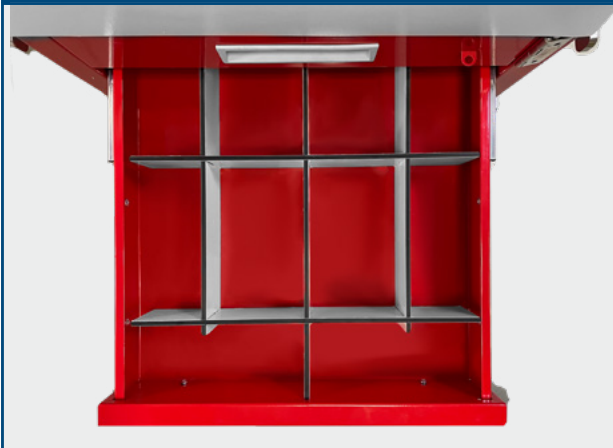
Recommended optional components

ACCFI4



6-drawer sectional chest of drawers

ACCFI5



Drawer divider kits: **ACCFI5/1** - 10 compartments; **ACCFI5/2** - 15 compartments; **ACCFI5/3** - 20 compartments; **ACCFI5/4** - 25 compartments

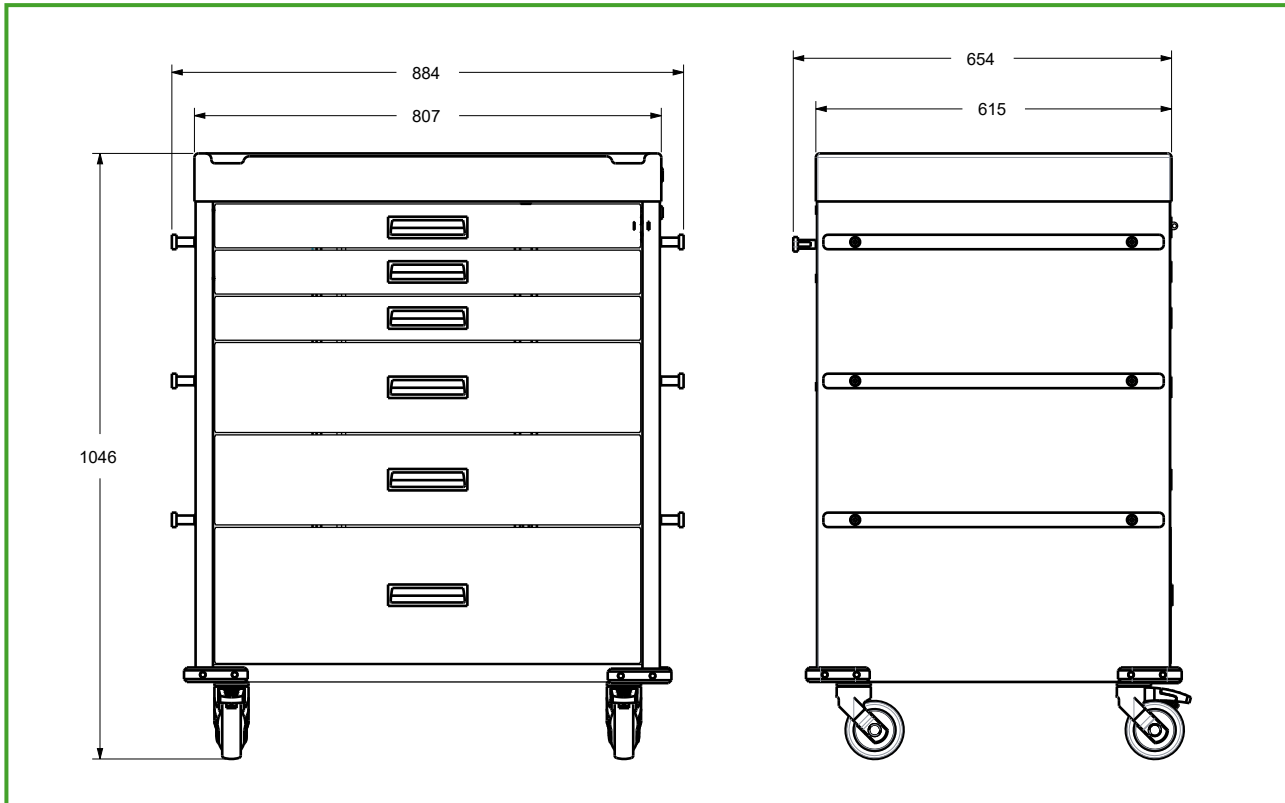
ACCFI6



Sealable central locking



Dimensional



Technical Sheet

Product Code	GB0321.SP-2.0
Intended Use	Multipurpose trolley
Manufacturer	GARDHEN BILANCE SRL

Gardhen Balance S.r.l

Via G. Luraghi c/o Consorzio Il Sole - lot S - 80038 Pomigliano d'Arco (NA) - Italy

Tel. +39.081.8692160 pbx - Fax +39.081.8692460

E-mail: info@gardhenbalance.it - PEC: gardhenbalance@pec.it

Visit our website www.gardhenbalance.it / Follow us on [in](#) [f](#) [yt](#) [ig](#) [p](#)



Images reproduced in this sheet are for reference only and dimensional values are nominal. It is the right of the manufacturer make changes to the designs without prior notice. For the identification of standard equipment and for the choice of any additional components refer to the optional components catalog and/or commercial proposals. In case of discordant data, the content of business proposals shall prevail. In the event that no preferences are expressed on the to the colors of the devices ordered, the same, will be made in the colors shown in the data sheet/brochure.

Dep. EN_18 rev. 16/05/2024

