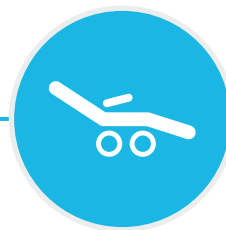


Francis evolution 2.0

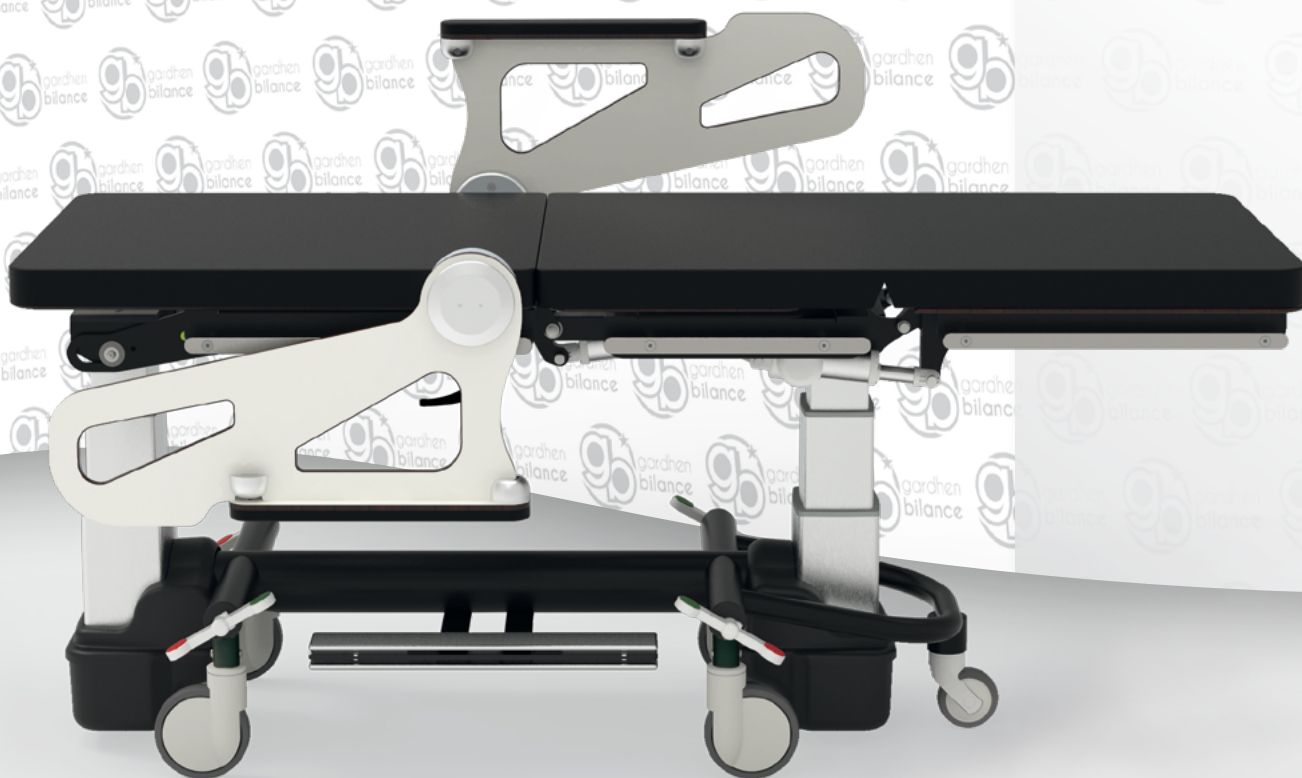
Italian design and technology



MULTIFUNCTIONAL OPERATING TABLE

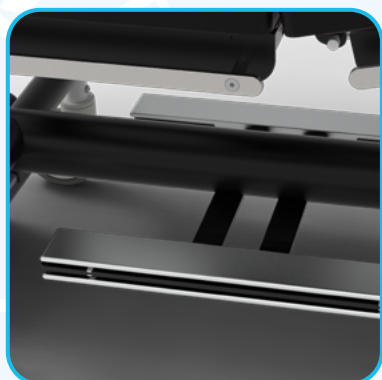
Frequent usage

Surgery





COLLAPISBLE SIDE RAILS COUPLE.
THE SIDE RAILS CAN BE PLACED
IN 3 POSITIONS.

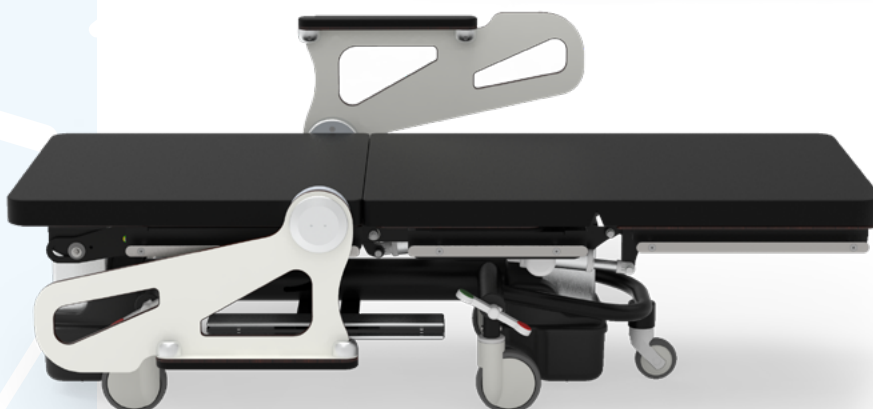
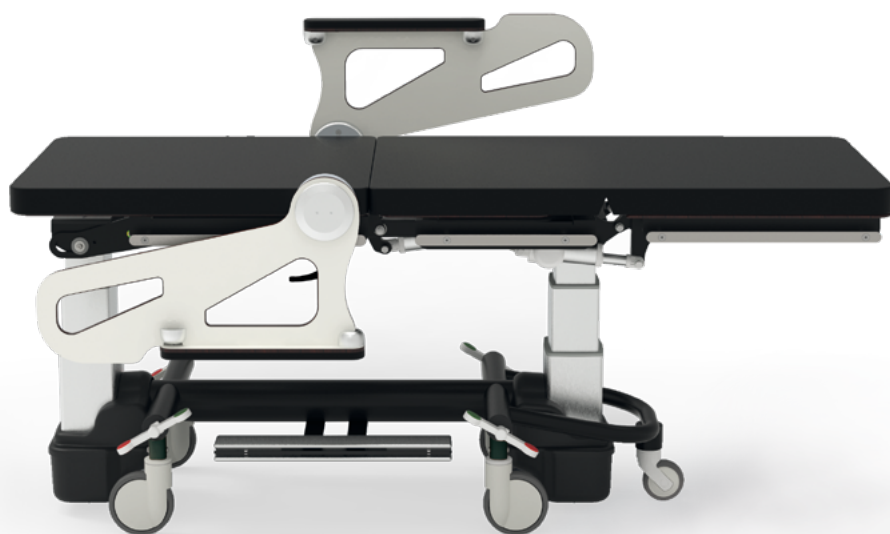


FOOT CONTROL

HEIGHT ADJUSTMENT ACHIEVABLE
THOROUGH MOTORIZED COLUMNS.
THE MOTORIZED COLUMN ARE
EQUIVALENT AND WAY BETTER THAN
SYSTEMS WITH LEVERISM ALSO
BECAUSE THEY ALLOW AN EASY
CLEANSING OF THE DEVICE.

Benefits

- Multifunctional operating table. It can be used for laser surgery intervention.
- Reduced footprint frame for an easy approach to the device.
- The device has high stability and it is made out with high end materials with non reflecting surface.
- Mattress in expanded foam with high density.
- Special padding made out of siliconic material with the following properties: water-repellant, non-toxic, antibacterial, resistant to both body and chemical liquids.
- Independent joints to achieve several positions.
- High stability for patient's transport.
- High performing wheels for easy transport even with the patient on board.
- Any part is exposed to wear.
- The device can be fully sanitized.
- It can be equipped with half-side rails or with adjustable armrests.
- It can be equipped with a wide range of accessories, allowing the surgeon to operate easily.
- Anti-shock position.
- Operativity is ensured for 24h with no need to connect the device to the power grid.



Standard features

- Standard features
- Lying surface divided into three sections with double articulation.
- No.6 DIN bars in stainless steel. A wide range of accessories can be fitted on the bars - Equipment code AC134.
- Motorized backrest.
- Motorized legrest.
- Motorized height adjustable through telescopic columns.
- Motorized Trendelenburg position.
- Software for movements' management.
- Electric low tension motors, spline type.
- Multitension power.
- Upholstery: with anti-bacterial properties, flame retardant class 1IM, antimicrobial, ecologic, latex free, phthalate free. Resistant to: alcohol, sodium hypochlorite max 5%, a wide range of common used detergent, liquid and other biological fluids. - Equipment code AC87/1.
- Supporting surface in HPL.
- Central section's sliding mechanism to avoid chest compression.
- Wheels diam. 150mm.
- Centralized and directional braking system activated through bilateral pedals - Equipment code AC7L2G.
- 5th wheel diam. 100mm - Equipment code AC118L.
- Equipotential node.
- Emergency battery - Equipment code AC17L.
- Non-reflecting painting made out with epoxy and thermosetting powders.
- Handset for movements' activation.
- Foot controls located at the abse of the device.
- Paper roll holder placed behind the back - Equipment code AC11.
- HPL side rails couple - Equipment code aC105L.
- Inhibition key for the handset - Equipment code AC34L.



10 BUTTONS HANDSET - STANDARD FEATURE

Couch's movements are controlled by a 10 buttons handset with a 3,5 m coiled cable;

For patient's safety purpose the handset is provided with an inhibition key, equipment code AC34L. The handset is user friendly and has visual pictograms useful for partially sighted people. Insulation IP66.



PAPER ROLL HOLDER PLACED BEHIND THE BACK

Motorized movements activated through the handset

From patient's stay to discharge, both operator and patient can adjust the backrest, the legrest, the inclination of the seat and the height of the device.

CHAIR AND COUCH WITH NO CHEST COMPRESSION. INDEED THE DEVICE HAS AN AUTOMATIC TRANSLATION SYSTEM SYNCHRONIZED WITH THE BACKREST'S MOVEMENT. THIS UNIQUE FEATURE AVOIDS ANY CHEST COMPRESSION WHILE THE BACK IS RAISED.

PERFECT POSTURE FOR MANY CLINICAL NEEDS. THE SURFACE IS MICROMETRICALLY ADJUSTABLE THROUGH AN EXTREMELY RESISTANT HANDSET.

Motorized movements activated through the handset

From patient's stay to discharge, both operator and patient can adjust the backrest, the legrest, the inclination of the seat and the height of the device.

SHOCK POSITION TO FAVOUR
VENOUS RETURN IN CASE OF
HYPOTENSION OR SIMPLY TO
ACHIEVE A POSTURE THAT IS MORE
CLOSE TO OPERATOR'S NEEDS.



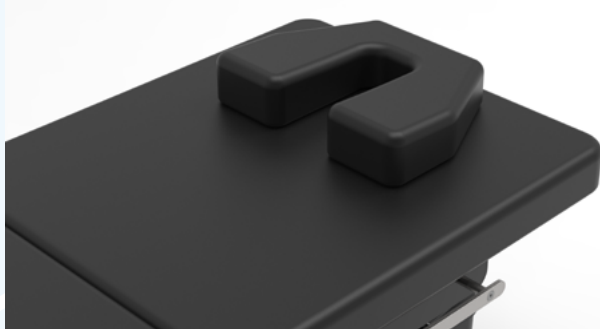
TRENDELENBURG



Recommended accessories



AC106



Single size, removable extra cushion to allow prone position. The mattress and the supporting surface can be provided with a face hole.

AC139

AC139/1

AC139/2

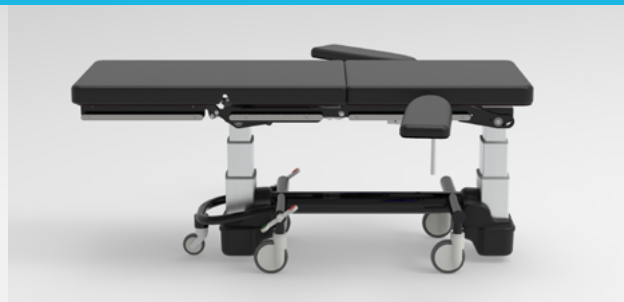


Foot controls located on the floor for height adjustment, they can be placed around the device according to user's need.

Foot controls located on the floor for backrest adjustment, they can be placed around the device according to user's need.

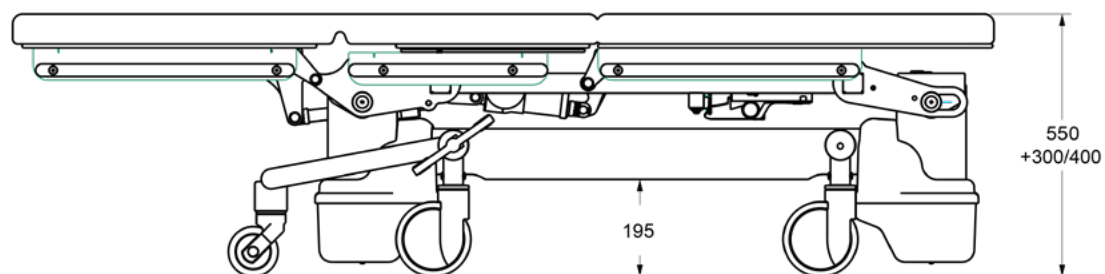
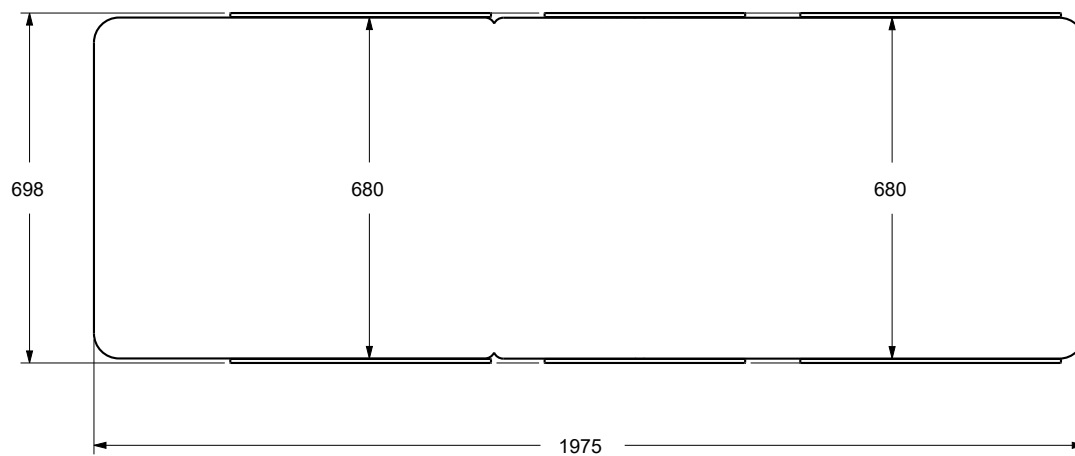
Foot controls located on the floor for Trendelenburg and reverse Trendelenburg adjustment, they can be placed around the device according to user's need.

AC104



Accessory AC104/L sliding armrests on bilateral DIN bars. They adapt to every posture and moves simultaneously with the lying surface. They are tiltable and swivable and can be adjusted in height.

Dimensions



MAIN CORD



Type F - Schuko



Type L - 16A



Type I - Australia

Type B - Canada
and USA

Type G - UK plug

Technical sheet



GMDN Code	Z129099
ID Code	GB0192.SP-2 Painted steel
Intended use	Examination electrical couch
Manufacturer	GARDHEN BILANCE SRL
Spare parts availability	10 years
Overall weight	140 kg
Controls	Handset with key
Battery autonomy	10 cycles autonomy
Power	Multivoltage 100-240 Vac 50-60 Hz
Main cord	Schuko or other upon request
Wheels	Wheels Ø 150 mm wheels with directional and centralized braking system activated through bilateral pedal; 5th wheel Ø 100 mm
Electrical motors	Low voltage (24 V)
Max electrical input	480 VA
Insulation	IP44
Max load	300 kg
Safety working load	335 kg

For certifications please refer to "Certifications and Quality system" section

Pictures contained in this brochure is for illustrative purpose only. The manufacturer reserves the right to modify the projects without notice. For accessories identification please refer to the accessory catalogue or commercial offer. When data are different please refer to commercial offer.

Dep.158 rev.19/12/2022

