



CHAIR

Frequent usage

- Chemotherapy
- Infusions therapy
- Day Hospital
- Blood donor
- Blood samples
- Emergency
- Dialysis
- Patient's transport
- Dermatology / Cosmetics
- Multifunctional



Benefits

- Anti-tilt frame in every operative conditions.
- Frame painted with epoxy paints enriched with antibacterial. Available in a wide range of colours.
- Simultaneous movement of back and leg section through 1 motor; it can be implemented with 2 up to 5 motors according to the requested configuration:
 - Dedicated motor for the independent movement of the backrest and the legrest (accessory code AC12).
 - Motorized column for height adjustment (accessory code AC28/200).
 - Dedicated motor for the inclination of the seat (accessory codes AC35/1 - AC35/2 - AC35/3).
 - Dedicated motor for footrest adjustment (accessory code AC13 - AC13/1); (please refer to the commercial offer and the accessory catalogue).
- Three separate cushions for back, seat and leg functional for a perfect ergonomomy and posture preventing decubitus wounds.
- The seat and leg upholstery is removable allowing a thorough and effective sanitization reducing the risks of cross infections. A wide range of colours is available.
- Upholstery's features: antibacterial, flame retardant class IIM, antimycotic, ecologic, latex free, phtalate free and resistant.
- Armrest's movements synchronized with the backrest.
- Available with a wide range of functional and exclusive accessories (see accessories catalogue).
- Excellent and ergonomic posture with decubitus wound preventive effect.
- Braking system ensures high stability to the device.
- Easily sanitizable with the most common used detergents.
- Armrest with multiple adjustment functions.
- Max load capacity 200 kg (standard version), available even with a max load capacity of 300 kg (bariatric version).



Would you like to customize upholstery or frame?

Scan or click the QR code and discover how to customize the device consulting our colour chart.

Standard features

- Painted steel frame in thermosetting powder.
- Simultaneous movement of the back section and the leg section through 1 motor.
- Lying surface divided in 3 sections (backrest, seat and leg).
- 10° Trendelenburg position (shock position as alternative).
- Headrest joint to the backrest.
- Armrest's movements synchronized with the backrest. The armrests are completely removable and can be rotate, tilted and overturned at 90°; (please refer to the accessories catalogue for other version of armrests) - Equipment code AC30/C1.
- No. 4 wheels Ø 100 mm antistatic, sturdy, stainless and swivable.
- Simultaneous brake on rear wheels in chromed steel - Equipment code AC7P1G.
- Chair's movements are controlled by handset with a 3,5mtl coiled cable. The handset is user friendly and has visual pictograms useful for partially sighted people. Handset is equipped by 10 buttons with 2 memories. For patient's safety purpose the handset is provided with an inhibition key - Equipment code AC34P. Insulation IP66.
- Bilateral handset support - Equipment code AC25P.
- ABS base cover - Equipment code AC83.
- ABS seat cover - Equipment code AC84.
- Easily removable soft foam independent cushions.
- Upholstery: with anti-bacterial properties, flame retardant class 1IM, antimicrobial, ecologic, latex free, phthalate free. Resistant to: alcohol, sodium hypochlorite max 5%, a wide range of common used detergent, liquid and other biological fluids. - Equipment code AC87/1.



**10 BUTTONS HANDSET
WITH 2 MEMORIES**

Armrests' movements



ROTATION



ADJUSTABLE HEIGHT



TILTABLE



REMOVABLE



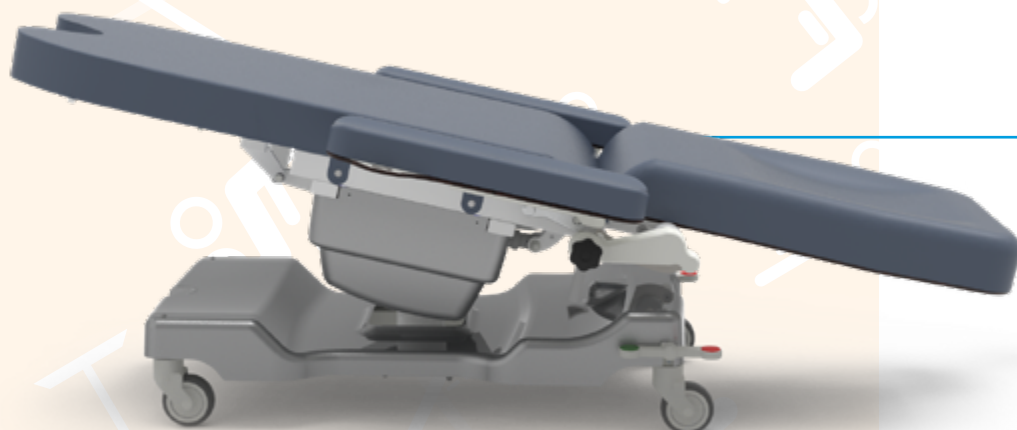
OVERTURNABLE



JOINTLY TO THE BACKREST

Movements

TRENDELENBURG



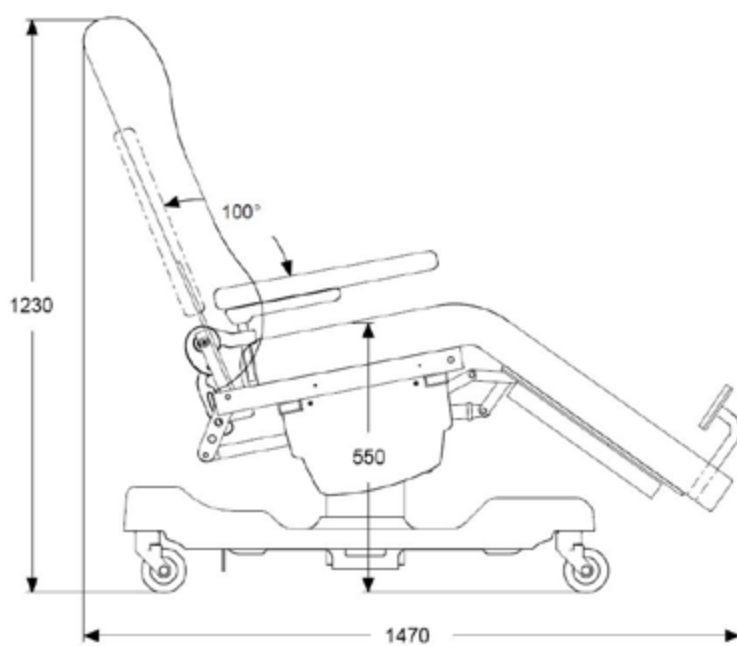
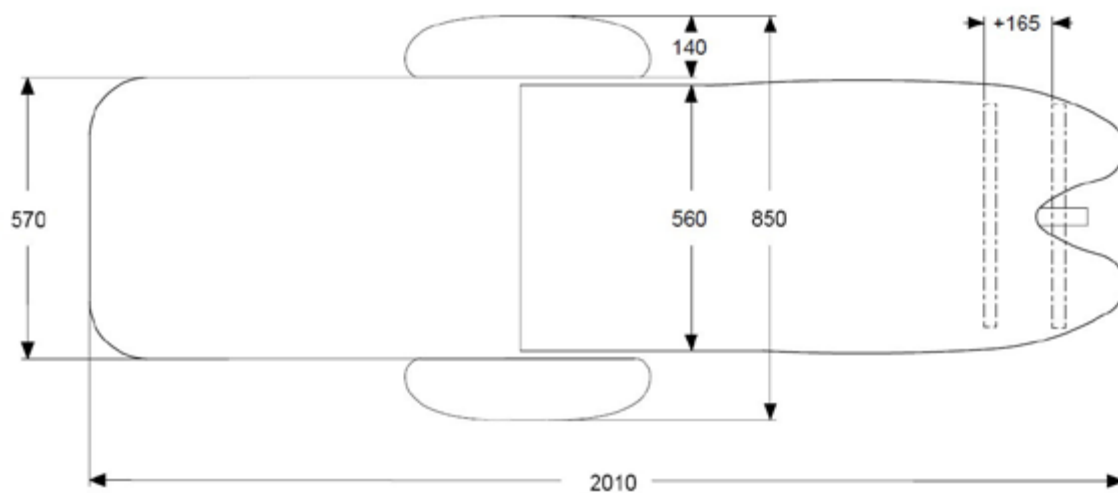
SHOCK POSITION



RECLINER POSITION



Dimensions



MAIN CORD



Type F - Schuko



Type L - 16A



Type I - Australia

Type B - Canada
and USA

Type G - UK plug

Technical sheet



GMDN Code	38447
ID Code	GB0165.SP Painted steel
Inteded use	Multifunctional chair
Manufacturer	GARDHEN BILANCE SRL
Overall weight	Standard 70 kg / Bariatric 100 kg
Wheels	No. 4 Ø 100 mm swivable and stainless with braking system
Power	100 - 240 Vac 50/60 Hz
Electric motors	Low voltage 24 (Volt)
Max electrical input	4A
Insulation	IP44
Max Load	Standard 200 kg / Bariatric 300 kg
Safety Working Load	Standard 235 kg / Bariatric 335 kg

For certifications please refer to "Certifications and Quality system" section

Pictures contained in this brochure is for illustrative purpose only. The manufacturer reserves the right to modify the projects without notice. For accessories identification please refer to the accessory catalogue or commercial offer. When data are different please refer to commercial offer.

Dep. EN_88 rev. 06/07/2022

