

# Athena 2.0

Multifunctional stretcher chair



SEATING

Frequent use

Day Hospital  
Emergency room  
Patient transport  
Multifunctional  
Triage



Transportation in  
**SECURITY**

Inpatient and outpatient reception



[www.gardhenbalance.it](http://www.gardhenbalance.it)

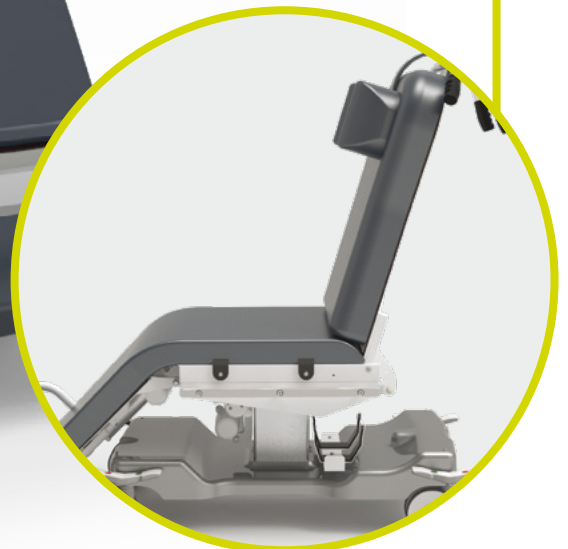


## Standard equipment



**Easily collapsible side-rails**

**Manually removable side-rails**





## Standard equipment

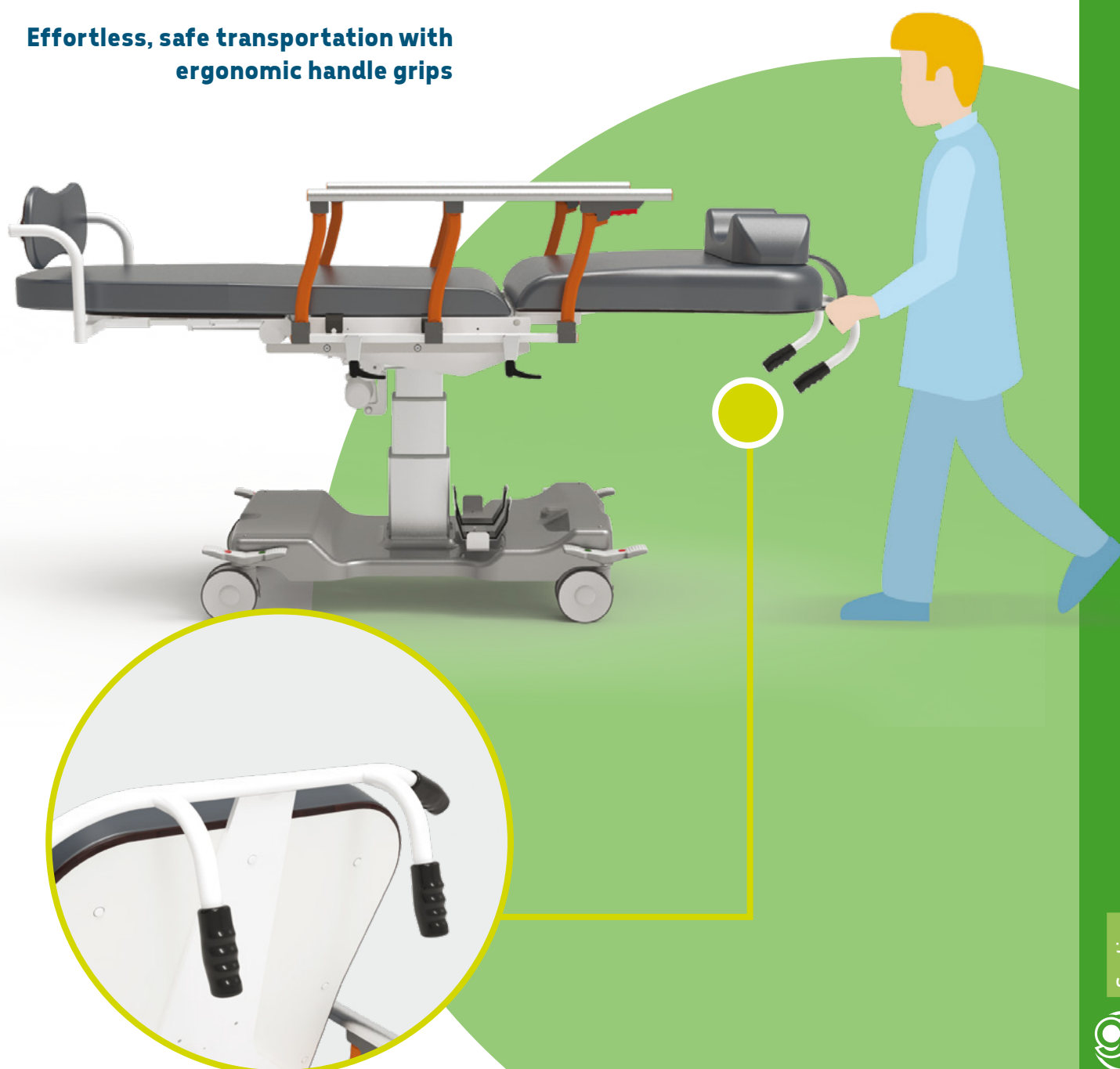
### The stretcher changes its appearance

**ATHENA 2.0 is a combination of passion, elegance and a lot of experience.**

The study for the details and the technological research are evident, however the real difference is provided by its practical functional solutions. Suitable to accommodate patient's of every size, it ensures positive feeling and incomparable relaxation. It helps to perform all therapeutic treatments in a perfect postural conditions.

The advantageous comfort of an armchair, as comfortable as a bed and as functional as a stretcher. Suitable for any clinical situation, it favours unique postural conditions allowing to accomodate patients of different sizes. The project represents an innovative furnishing solution, reduces the patient's psychological discomfort without sacrificing the performance of the classic stretcher.

**Effortless, safe transportation with ergonomic handle grips**





## Movements

### Handset

All movements are controlled by dedicated buttons on the **handset**.



### Height Variable

Adjustable via motorized columns



### Trendelenburg





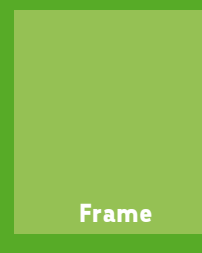
## Other features of the medical device

- Painted steel frame in thermosetting powder.
- Foldable side rails couple - Equipment code AC132.
- No. 4 twin 150 mm wheels - Equipment code AC5P/1.
- Simultaneous wheel lock via bilateral pedal and with directional system - Equipment code AC7P2G.
- Bilateral front/rear pedal brake - Equipment code AC7P3.
- Electrically driven movements through handset:
  - Motorized variable height 300 mm - Equipment code AC28/200.
  - Backrest section
  - Leg - Equipment code AC12.
  - Trendelenburg.
  - 0°/-15° motorized seat - Equipment code AC35/1.
- Legrest - Equipment code AC13/SH1.
- Oxygen tank holder - Equipment code A95P.
- Double handle with ergonomic grip - Equipment code AC117.
- 13 buttons handset to achieve all the available movement, it features an inhibition key and pre-setted position (equipment code AC6MP). Chair's movements are controlled by a 10 buttons handset with a 3,5mtl coiled cable; For patient's safety purpose the handset is provided with an inhibition key, Equipment code AC34P. The handset is user friendly and has visual pictograms useful for partially sighted people. Insulation IP66.
- Bilateral handset support - Equipment code AC25.
- Powered by interchangeable 4.5 Ah battery (no. 2 supplied) with desktop charger - Supply code AC17P/A.
- Supplementary headrest pillow - Equipment code AC27.
- Seat/leg section cushions easily removable.
- Soft and removable coating for the footrest - Equipment code AC16/1.
- ABS cover for base - equipment code AC83.
- Cushions made in soft foam height 100 mm.
- Upholstery: with anti-bacterial properties, flame retardant class 1M, antimicrobial, ecologic, latex free, phthalate free. Resistant to: alcohol, sodium hypochlorite max 5%, a wide range of common used detergent, liquid and other biological fluids. - Equipment code AC87/1.

### Do you want to change the color of the upholstery and frame?

Frame or click the QR codes and find out how to customize your device by browsing our color cards\*.

\*If no preference is expressed, the device will be supplied with the available color.







## Optional Components

### AC109



HPL side rails fold down on DIN rail

### AC109/1

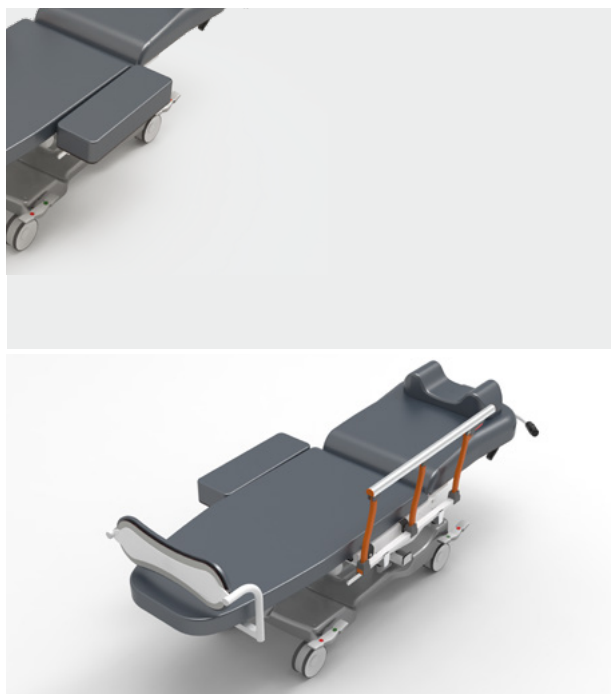


Folding HPL side rails complete with armrests on DIN rail



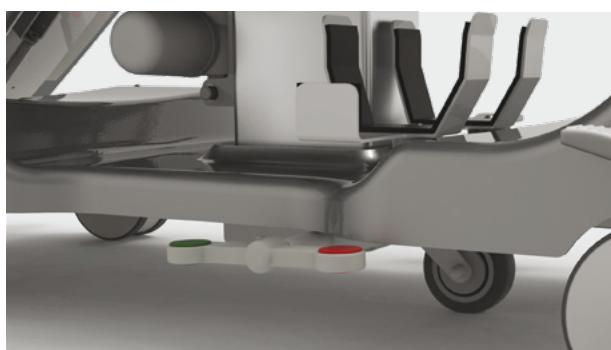
## Optional Components

### AC133



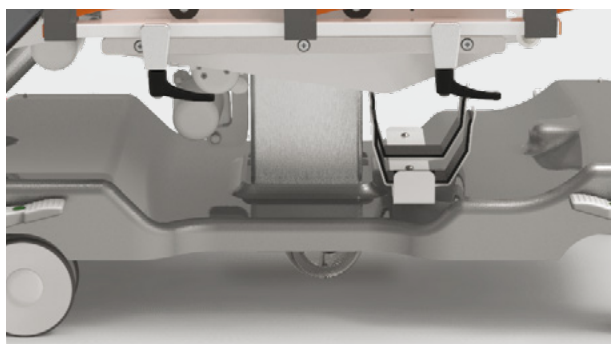
Seat width extendable by 20 cm on DIN rail

### AC118



Fifth directional wheel with foot pedal activation

### AC129



Self-leveling shock-absorbing fifth swivel wheel



## Optional Components

### AC144



Multifunction armrest on DIN rail

### AC4P/3



DIN rail-mounted steel pipe support rod

### AC145



DIN clamp, universal for accessory housing



### Do you want to implement the device?

Frame the QR code and discover all the optional components available by browsing the catalog.





## Data sheet

CND/EMDN Code	V08020101
GMDN Code	38447
No. progressive/R	2433997/R
UDI-DI Basic	805771740DITRGR
Product Code	GB0228.SP Painted steel
Intended Use	Multifunctional chair
Manufacturer	GARDHEN BILANCE SRL
Total weight	80 kg
Wheels	N°4 twin wheels 150 mm with braking system
Power supply	100 - 240 Vac 50/60 Hz
Electric motors	Low voltage (24 V)
Max absorption	4A
Insulation	IP44
Maximum Scope	200 kg
Safe Workload	235 kg

## Main Cord



**Type F - Schuko**



**Type L - 16A**



**Type I - Australia**



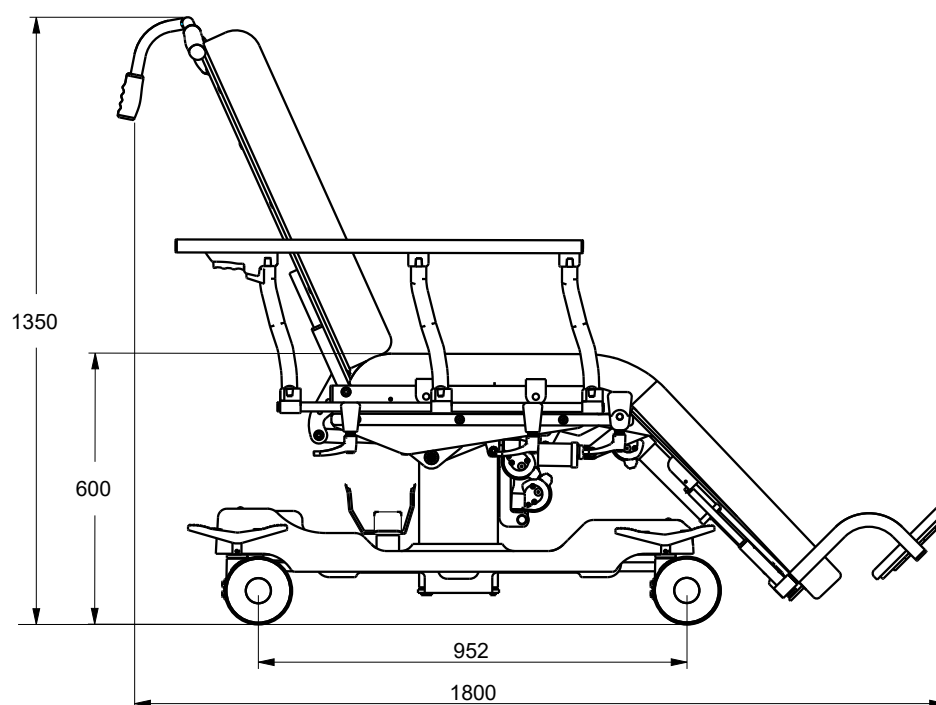
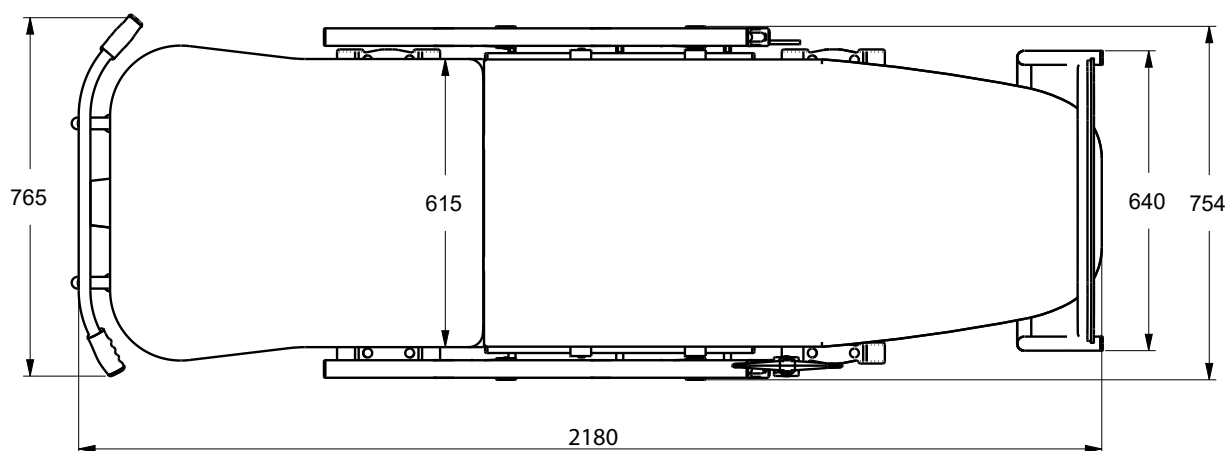
**Type B - Canada and USA**



**Type G - UK plug**



## Size table



[www.gardhenbalance.it](http://www.gardhenbalance.it)



### Gardhen Balance Srl

Via G. Luraghi c/o Consorzio Il Sole - lotto S -  
80038 Pomigliano d'Arco (NA) - Italy  
Tel. +39.081.8692160 pbx - Fax +39.081.8692460  
E-mail: [info@gardhenbalance.it](mailto:info@gardhenbalance.it)  
PEC: [gardhenbalance@pec.it](mailto:gardhenbalance@pec.it)

Images reproduced in this sheet are purely indicative and dimensional values are nominal. It is the right of the manufacturer to make changes to the designs without any notice. For identification of standard equipment and for the choice of any additional components refer to the catalog optional components and/or commercial proposals. In case of discrepant data, the content of the commercial proposals shall prevail  
Dep. EN\_19 rev. 01/07/2024