

Antares

Hospital bed



ALL CLINICAL
AREAS

Frequent usage

All clinical areas
Intensive care unit



DESIGN & TECHNOLOGY

italian in the world



www.gardhenbalance.it



Standard features

PATIENT SURFACE

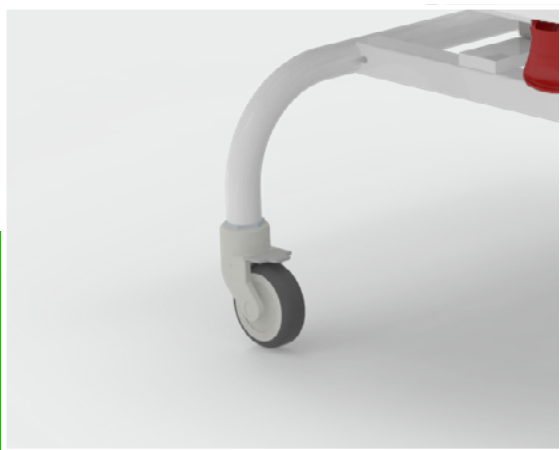
4 sections triple articulation with thermoformed covers made of ABS

SHOULDERS

Removable made of technopolymer with HPL panel.

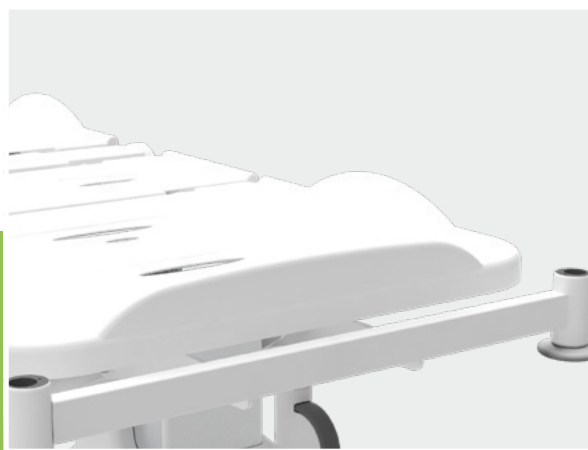
WHEELS

swiveling and non-marking wheels Ø 100 mm - 2 wheels are equipped with brakes .



Braking system

2 wheels are equipped with brakes



Shoulders

Fully removable headboard and footboard for easy sanitisation.



Quick release of the backrest

To facilitate the CPR maneuver in an emergency (equipment code AC8L).



Shoulders

Shoulders made of technopolymer with HPL center panels, available in blue (like photo) or white.

Do you want to change the color of the frame and vinyl insert?

Frame or click the QR code and find out how to personalize the device by consulting our color cards*.

*If no preference is expressed, the device will be supplied with the available color.

Frame

Vinyls



Handset

It is possible to use the handset for movement management. The push-button panel is connected to the device by means of 3.5 m extendable coiled wire, and is intuitive and practical to use since it is equipped with embossed screen-printed pictograms that identify each movement that can be activated.



MOVEMENTS AND FUNCTIONS

Movement of sections:

- Back section
- Femoral Section
- Simultaneous Back/Femoral Sections

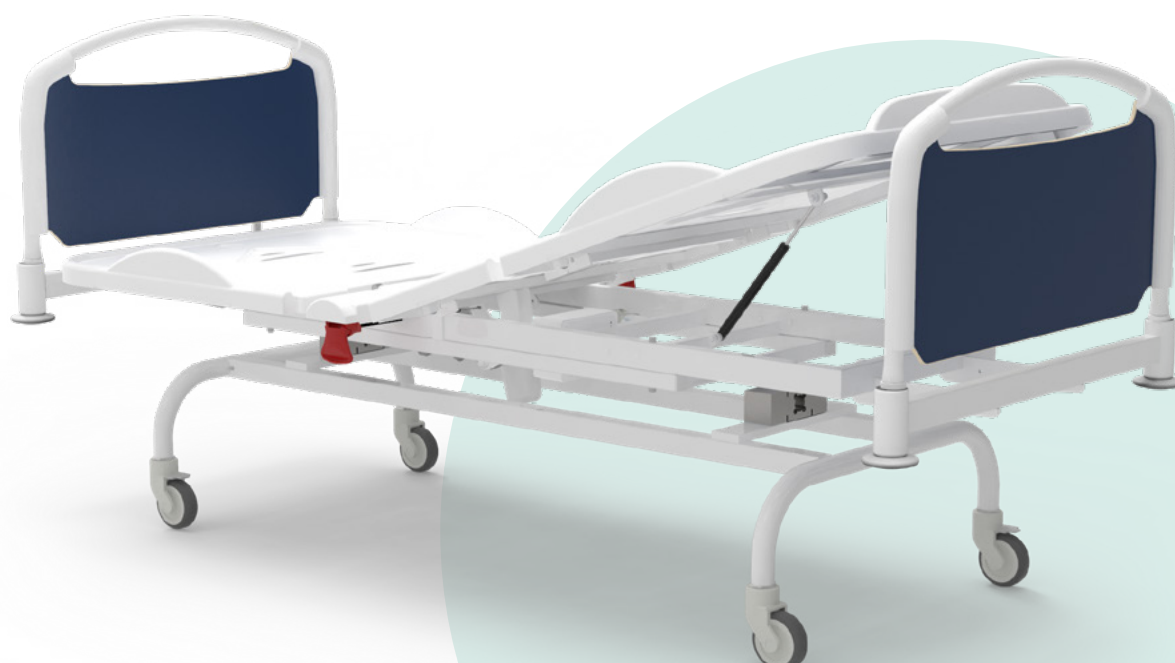


Movements

Clinostatic position

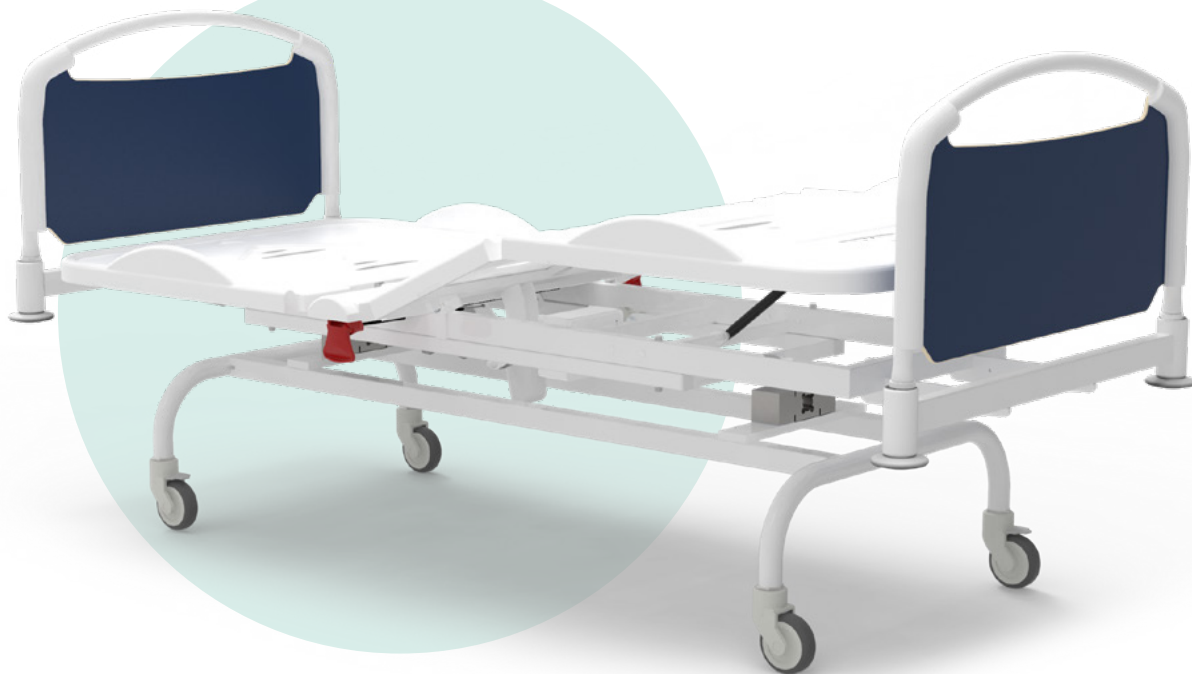


Shock Position





Movements





Configurations

The bed can be configured with the following **side rails/shoulders**:



With AC65 shoulders and AC21/1 side rails

Shoulder made of technopolymer with HPL core panels, available in blue (see photo) or white..



With AC65/2 shoulders and AC21/1 side rails

Shoulder made of technopolymer, with provision for adhesive vinyl insert, located inside and/or outside the shoulder. Available in different colour variants that can be consulted in the special colour chart.



Configurations

The bed can be configured with the following **side rails/shoulders**:



With AC65 shoulders and AC20 side rails



With AC65/2 shoulders and AC20 side rails



Standard features

- Reinforced frame in extra sturdy painted steel. It is painted in thermosetting and antibacterial epoxy paint.
- 4 Sections patient surface with 3 joints covered in thermoformed ABS covers, washable and removable.
- Motorized back section.
- Motorized femoral section.
- Gas spring-assisted servo leg section synchronous to the movement of the femoral section.
- Quick release of the backrest, to facilitate the CPR maneuver (equipment code AC8L).
- Low-voltage electric motors of the anti-crushing and anti-shearing type.
- Battery box-power the entire device in the event of a power outage (supply code AC17L).
- Technopolymer shoulder with removable HPL panel (equipment code AC65). Alternatively, shoulder made of technopolymer with customizable insert (equipment code AC65/2). It is possible to add for both sides the safety lock (optional component code AC121)
- 4 Perimeter bumpers.
- Cable reel (supply code AC50L).
- Equipotential node.
- Swiveling and non-marking wheels Ø 100 mm - 2 wheels are equipped with brakes.
- Movements are controlled via perimeter hand control equipped with a 3.5-m spiral cable. The push-button panel, with IP66 insulation rating, is easy to use as it is made with large raised pictograms and is also suitable for visually impaired patients.
- For patient safety, the hand control is equipped with a key for control inhibition (equipment code AC34L).
- Provision for side rails (equipment code AC21/S).

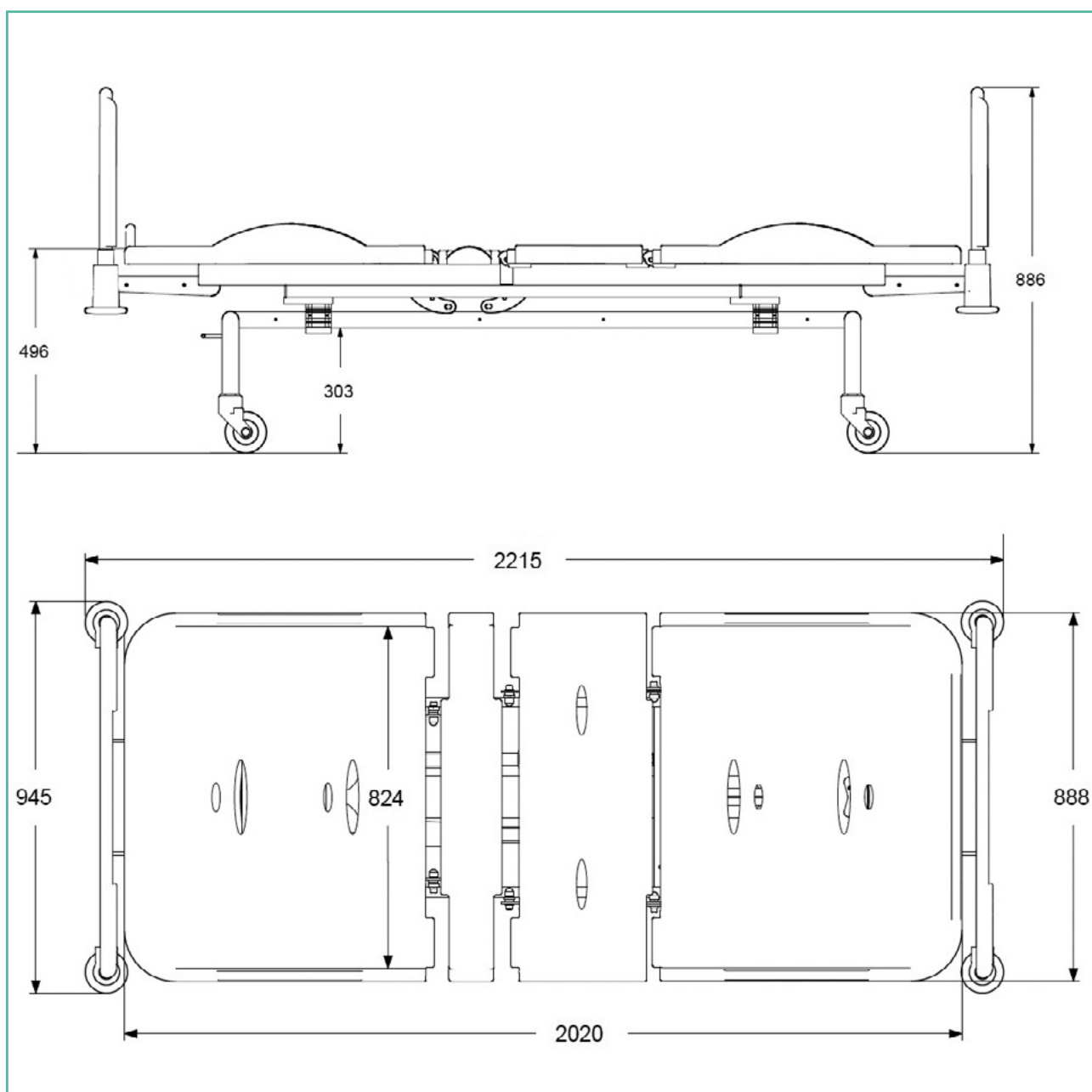


Do you want to implement the device?

Frame the QR code and discover all optional components by browsing the optional components catalog.



Dimensions





Data sheet

GMDN Code	V08060101
GMDN Code	34870
No. progressive/R	2429923/R
UDI-DI Basic	805771740LETNC
Product Code	GB0014.SS Painted steel
Intended Use	Multifunctional bed
Manufacturer	GARDHEN BILANCE SRL
Spare parts availability	Not less than 10 years
Bed weight	80 kg
Type of control	Handset with key
Battery	Autonomy 10 cycles
Power supply	Multitensione 100-240 Vac 50-60 Hz
Power cord type	Schuko o altra su richiesta
Wheels	4 Swiveling and non-marking wheels Ø 100 mm - 2 wheels are equipped with brakes
Electric motors	Low voltage (24 V)
Max absorption	460 VA
Insulation	IP44
Maximum Scope	200 kg
Safe workload	235 kg

Main cord



Type F
Schuko



Type L
16A



Type I
Australia



Type B
Canada and USA



Type G
UK plug

Antares

Hospital bed

www.gardhenbalance.it



Gardhen Balance S.r.l.

Via G. Luraghi c/o Consorzio Il Sole - lotto S

80038 Pomigliano d'Arco (NA) - Italy

Tel. +39.081.8692160 pbx - Fax +39.081.8692460

E-mail: info@gardhenbalance.it

PEC: gardhenbalance@pec.it

Images reproduced in this sheet are for reference only and dimensional values are nominal. It is the manufacturer's right to make changes to the designs without prior notice. Refer to the optional components catalog and/or commercial proposals for identification of standard equipment and selection of any additional components. In case of discrepant data, the contents of the commercial proposals shall prevail.
Dep. EN_203 rev. 17/07/2024