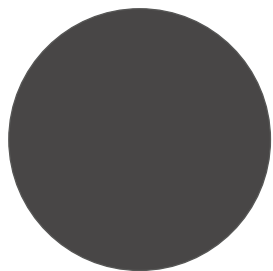




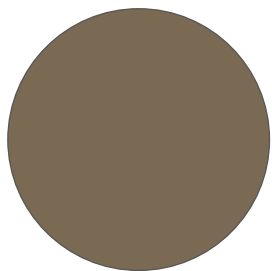
**SCHEDA COLORI**  
**COLOURS CHARTS**

**Rivestimenti silconici**  
*Silicone upholstery*

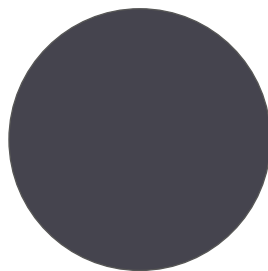
# Rivestimenti siliconici (accessorio - AC87)



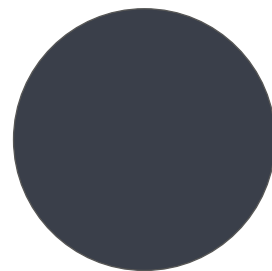
**7039.08**



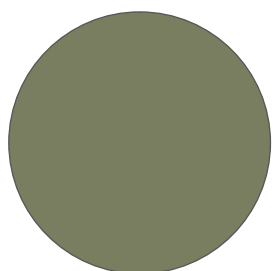
**7039.06**



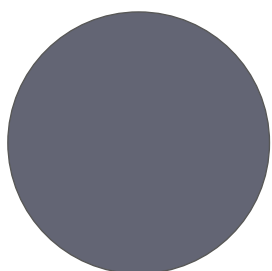
**7039.17**



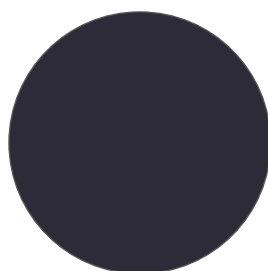
**7039.20**



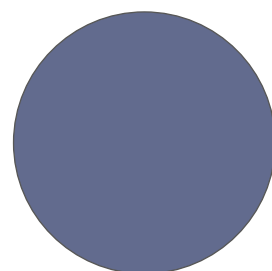
**7039.10**



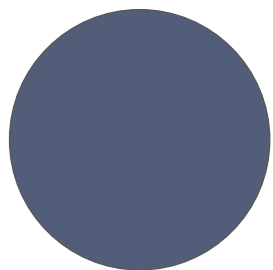
**7039.19**



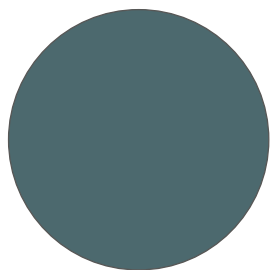
**7039.13**



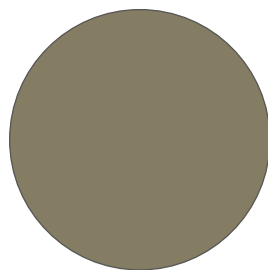
**7039.14**



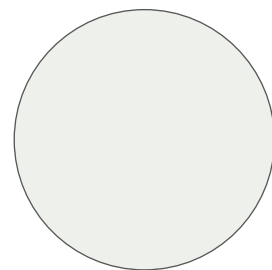
**TH.513**



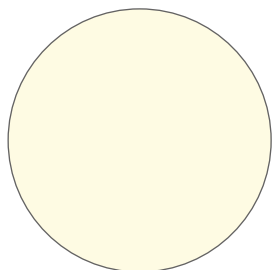
**TH.511**



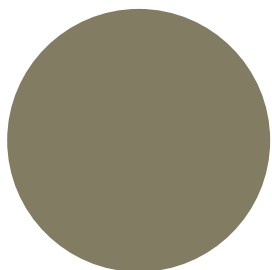
**TH.305**



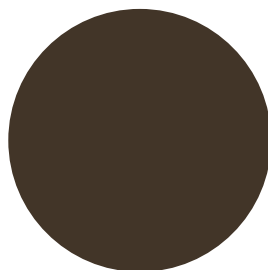
**TH.378**



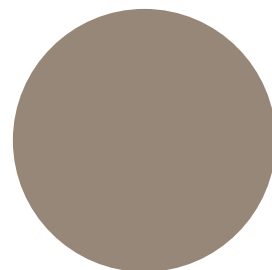
**TH.300**



**TH.510**

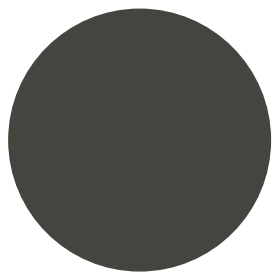


**TH.439**

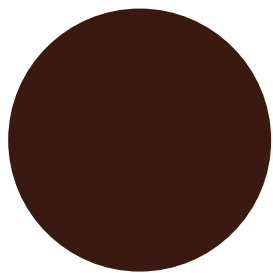


**TH.438**

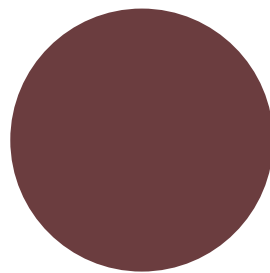
# Silicone upholstery (accessories - AC87)



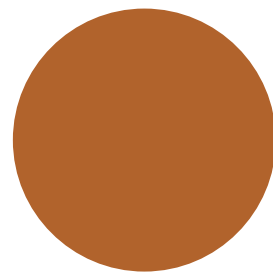
TH.322



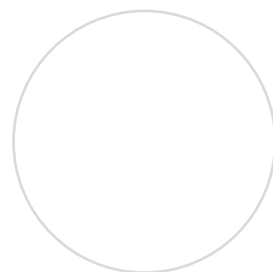
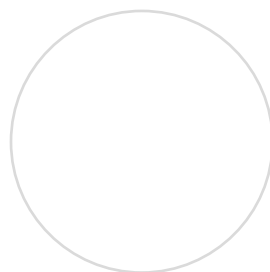
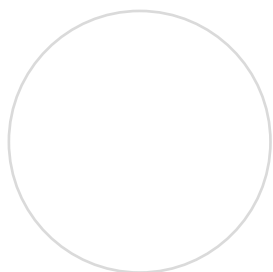
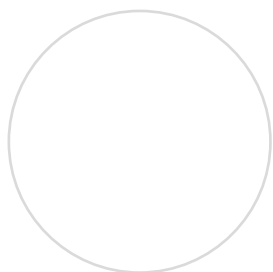
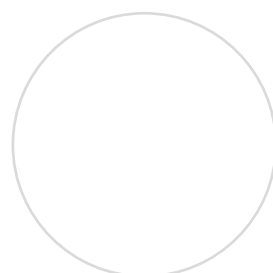
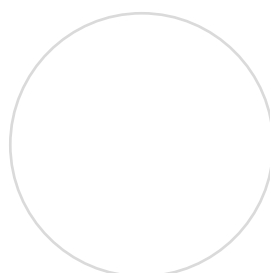
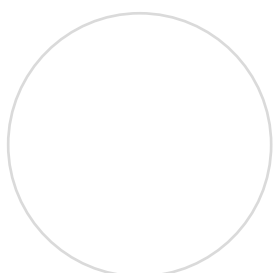
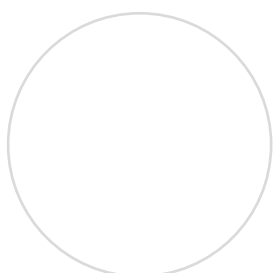
TH.224



TH.312



TH.226



I contenuti di questa scheda sono puramente indicativi e non possono essere considerati in alcun modo vincolanti. Sono ammesse leggere differenze di colore tra lotti diversi. È facoltà del produttore cambiare i materiali, la loro composizione ed i colori, senza alcun preavviso.

*Data included in this sheet, are purely indicative and cannot be considered binding. Different batches may have slight differences in colour. The manufacturer reserves the right to change the materials, their composition and colours, without notice.*



# Specifiche tecniche rivestimenti silconici (accessorio - AC87)



**Composizione:** Tessuto silconico su base in poliestere

**Altezza:** ±137 cm

**Larghezza:** ±800 gr/m1

**Spessore:** 1 mm

## Proprietà

Resistenza al fuoco: EN 1021-1,2 / BS 5852, crib 5 / NFP 260 / CA 117 / NFP 92503, M1 / DIN 4102, B2

Resistenza all'abrasione: martindale: 130.000 rubs

Resistenza allo sfregamento: bagnato 4,5 / asciutto 4,5 (scala 1-5)

Resistenza alla luce: colori 7039.03 & 7030.22 - 5,5 (scala 1-8) / altri colori 6,5-8 (scala 1-8)

Resistenza all'urina: buona

Resistenza alla trazione: warp 1388 N / weft 1795 N

Flessibilità: > 5.000

**Manutenzione:** Detergenti a base d'acqua / ipoclorito (4:1)

# Technical upholstery silicone properties (accessory - AC87)



**Composition:** Silicone coat on a polyester backing

**Width:** ±137 cm

**Weight:** ±800 gr/m1

**Thickness:** 1 mm

## Properties

Flame retardancy: EN 1021-1,2 / BS 5852, crib 5 / NFP 260 / CA 117 / NFP 92503, M1 / DIN 4102, B2

Abrasion: Martindale: 130.000 rubs

Fastness to rubbing: wet 4,5 / dry 4,5 (scale 1-5)

Light resistance: colours 7039.03 & 7030.22 - 5,5 (scale 1-8) / other colours 6,5-8 (scale 1-8)

Resistance to urine: good

Tensile strenght: warp 1388 N / weft 1795 N

Flexibility: > 5.000

**Care:** Waterbased cleaning agents or foam / bleach cleanable (4:1)



## Gardhen Balance S.r.l.

Via G. Luraghi c/o Consorzio Il Sole - lotto S - 80038 Pomigliano d'Arco (NA) - Italia

Tel. +39.081.8692160 pbx - Fax +39.081.8692460

E-mail: info@gardhenbalance.it - PEC: gardhenbalance@pec.it

Visita il nostro sito [www.gardhenbalance.it](http://www.gardhenbalance.it) / Seguici su     